

Unlocked /disengaged Prefabricated chimney
Liner

Accurate information is important for making decisions about a chimney. *National Fire Protection Agency (NFPA) 211 codes—2013 edition* requires companies to do a Level II inspections when a home is sold or new heating appliances are being installed. Chim-Scan® equipment allows the operator to do Level II inspections and document the findings. If you are a homeowner having your chimney swept, ask for a video inspection. Seeing the interior of your chimney will give you added peace of mind and a general knowledge of your chimney system. So ask for it by name, “I want a Chim-Scan® done on my chimney!”

If you are a fire inspector or insurance adjustor, your evaluations should be based on accurate and documentable information. Take the guesswork out of a chimney evaluation by hiring a chimney professional who has the Chim-Scan® video evaluation system.



During construction the prefabricated chimney
liner was not connected properly

Over the course of time, use or unused chimneys need periodic maintenance. In other situations, some things don't go as planned and corners may be cut, but the venting system is NOT the best place to do this.

See the condition of your Chimney with Chim-Scan®
Your Local Operator is:



*What is the most active
part of your home;
yet never
moves?*

Chimney Operation Satisfaction

Rain entering the chimney



What is the most active part of your home yet never moves, it's the chimney, 24/ 7/365 thousands of cubic feet of air travel through it, some clean some not so clean. No homeowner should assume their chimney can be used without a thorough examination, both exterior and interior. Rain, flue gases, and freezing moisture cause erosion and deterioration to chimneys. Breaks in the chimney liner even small ones—can reduce the chimneys ability to vent all the products of combustion, allowing combustion gases and condensation to enter the home structure.

While viewing the Chim-Scan® screen from the hearth or chimney base, homeowners can view the condition of their fireplace and/or chimney. The Scan operator can point out vital information about the chimney's interior condition. In gas and oil central heating systems early detection of condensates within the chimney can help prevent additional costly home repairs. As indicated in the photo below the condensates from high efficiency units can literally eat away the chimney liner casing. The liner chips fall and can possibly close off the connector pipe!



Exhausting high efficiency gas can erode liners



75% of mortar has been eroded away due to weather

In the past, the examination of the chimney interior involved either an ineffective flashlight and mirror or the expensive disassembly of part of the chimney to see problem areas. Now with the Chim-Scan® video inspection service, it is easy to obtain an accurate evaluation of your chimney's interior in a non destructive way. Your chimney professional will be able to show you these precarious conditions, if they exist:

- * Improper new construction
- * Chimney fire damage
- * Improper prefabricated chimney connection
- * Deterioration from gas appliance connections
- * Cracks, even hairline cracks, in flue liners
- * Broken or missing tile liners and mortar joints
- * Deterioration of the smoke shelf or damper
- * "Quick-Fixed" thimble holes
- * Hidden Breachings
- * Nests, limbs and other blockages

Open Mortar joint - Exhausting combustibles into wrong area outside the chimney



Increased use of fireplaces and wood heat has resulted in an increase in chimney fires. When conducting a sudden occurrence investigation, a Chim-Scan® video inspection service can give you the reliable information you need. An examination soon after the mishap can determine the cause of damage. Whitened mortar joints, blaze marks, missing mortar, cracks and discoloration in liners and buckling of steel liners are indications of sudden occurrence chimney damage.

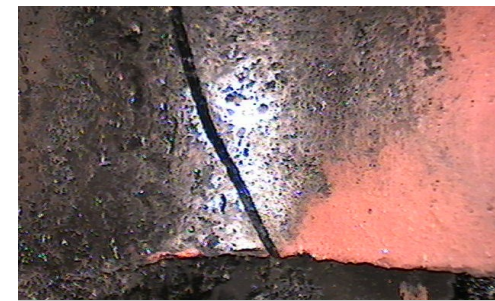
Your inspection may provide several reports formats: a written report on a chimney evaluation form or digital photographs and reports which can be e-mailed.



Pyrolyzed creosote and cracked flue liner

A video inspection of a chimney interior offers both the Fire Investigator and the Insurance Adjustor these important benefits:

- * You get detailed information, obtained only inches away from the chimney walls.
- * You get complete documentation in a variety of digital formats.
- * You save time on claim processing by getting reliable information easily. If requested, an estimate for repair may be offered by the inspecting company



Vertical Crack in Corner of tile.