

Chim-Scan® Series 200 System with new SD Recorder



NOTE: In order to have a well rounded manual that can answer most of your questions, we have created a universal manual for each series we offer. This way if you buy another camera or stabilizer, you'll have all the info you need for set up.

So please anticipate that not everything is going to apply to your unit. If you need clarification please call or email. Thanks Estoban Corporation



Due to continuing improvements, actual product may differ slightly from photo.

CAUTION

Secure Camera Equipment in all applications.
If NOT, Damage or Personal injury can occur.



Table of Contents

	Page #
Troubleshooting Guide	3
Terms and Warranty	4
Precautions	7
Video Scanning Interpretations	9
Scanning Procedures	11
Principles of Scanning	16
Stabilizers	17
Hook up-Cables	20
Start Up Procedures	21
Control Box Details	22
Camera and Camera setups	27
Optional Keyboard and Battery	31
SD Recorder	33
What to do when your unit needs repaired and a copy of Repair Form	41

Find us on Facebook on the Estoban Corporation page or
in the Chim-Scan Group.

Find more videos on our YouTube Channel - ChimScan1643

Troubleshooting Guide

- ♦ Trouble shutting the lid, don't force it. Check the lid grove to see if there's anything in it.
- ♦ If the date and time stop working, it's time to change the batteries
- ♦ Be sure that the SD card clicks into place.
- ♦ Make sure SD is Unlocked – see small yellow tab on left side.
- ♦ Clean off your SD card every day.
- ♦ USE stabilizers on the camera at ALL TIMES!!!!
- ♦ Make sure there's nothing on the reeler when you close the case.
- ♦ Unit won't turn on
 - Check AC/DC switch. Make sure it's on AC if your plugged into the wall and on DC when using the battery pack.
 - Check 2amp Fuse
 - If you change the fuse and the unit still won't turn on or you hear a 'Pop' - the unit needs to be returned.

Blue Screen:

- ♦ Check the 1AMP fuse
- ♦ Flip the SD Bypass switch to see if you have an image. If you don't, check the camera/cable connections.
- ♦ Check the Cam1/Cam2 Switch (if you have it) (Cam 2 is for auto focus tilt cameras and Lighthouse cameras or combo systems)
- ♦ Check the AFT/Combo switch (if you have it)
- ♦ If you have a keyboard for text overlay Check F9 on the keyboard. If depressed it will show only a blue screen.
- ♦ Make sure ALL cables are connected before sending camera up the chimney.

Still having issues, call Estoban Corporation 1-800-722-8439

Estoban Corporation

Manufacturer of Specialty Vision Equipment

TERMS AND CONDITIONS OF SALE

- ◆ **All goods are sold with manufacturers' warranty only.**
- ◆ All returns must be made within seven (7) days and must be accompanied by sales invoice and return authorization number (RA#) issued by Estoban Corporation. Estoban reserves the right, at its discretion, to pro-rate a refund in lieu of repair or replacement.
- ◆ Merchandise for refund or replacement must be in original packing, containing the correct serial and model numbers, instruction manual, and all accessories.
- ◆ **All returns will be assessed a fifteen (15) % restocking fee.**
- ◆ All special order items must be accompanied by a twenty-five (25%) nonrefundable deposit.
- ◆ No returns or refunds on special order merchandise.
- ◆ Estoban Corporation has a twenty-five dollar minimum fee for handling and shipping. Any merchandise returned to us must be on a freight prepaid basis only.
- ◆ Accounts will be subject to a 1.5% service fee per month.
- ◆ All merchandise which requires factory repair, will be assessed a minimum fee of \$95.00 plus all shipping charges. Estoban does not undertake repair at the customer's site.
- ◆ **To return any equipment for repair,**
 - Call the repair center for an authorization, at 1-641-472-7643.
 - Fill out Repair Form on our website (www.chimscan.net) or print out the repair form and send it with unit.
 - ◇ If we received a repair without a Note or a filled out copy of the Repair Form whether in the box or by email, the unit will be put at the end of the repair line.
- ◆ Estoban Corporation minimum bench charge to check, or *give repair estimate* is \$95.00 *Estimate* will be credited towards final repair charges.
- ◆ On equipment returned for repair (past warranty) such as Camera image sensor, focus mechanism, tilt mechanism, monitor repairs, and control box, repairs completed are subject to 30 day repair warranty only. **All shipping charges are your responsibility.**
- ◆ **Cable repairs are not covered by any warranty and are not subject to the thirty (30) day repair guarantee.**
- ◆ **All repairs will be on prepaid or credit card basis only.**
- ◆ All above terms and conditions effective 2/20/19.

REV 2/20/19

WARRANTY

Estoban products, when operated under normal conditions of use, are warranted by Estoban to be free from defects in material and workmanship.

Warranty specifications apply from the date of purchase from Estoban or an authorized Estoban representative or distributor.

Subsequent re-sale is not covered by this warranty and claims subsequent to the warranty period will not be entertained.

Unauthorized extensions of warranties by the customer shall remain the customer's responsibility.

Specifications are as follows:

All SD Recorders, LCD screens and Digital recorder carry a 90 day limited warranty (*shipping not included*).

All Fixed Focus, Auto Focus and Remote Focus cameras and interior LED lights in these models, carry 1 year parts and labor (*shipping not included*).

All control boxes carry 1 year parts and labor (*shipping not included*).

All LED Exterior lights carry a 90 day warranty parts and labor (*shipping not included*).

All incandescent screw in lights, cables, and stabilizers are non-warranted items.

All warranties will be voided if either the whiskers or blowfish or special brushes supplied by Estoban are not used.

Warranty will be void, if the Ground plug has been removed from the power cord.

Estoban warranties do not extend to any goods or parts which have been subjected to misuse, modification, lack of maintenance, or damage resulting from fire, flooding, lightning or explosion.

THIS EXPRESS WARRANTY EXCLUDES ALL OTHER WARRANTIES OR REPRESENTATIONS EXPRESSED OR IMPLIED BY ANY LITERATURE, DATA OR PERSON. THE MAXIMUM LIABILITY OF ESTOBAN UNDER THIS EXCLUSIVE REMEDY SHALL NEVER EXCEED THE COST OF THE SUBJECT PRODUCT, AND ESTOBAN RESERVES THE RIGHT, AT ITS SOLE DISCRETION, TO PRO-RATE A REFUND IN LIEU OF REPAIR OR REPLACEMENT.

Estoban WILL NOT BE RESPONSIBLE OR LIABLE FOR INDIRECT OR CONSEQUENTIAL DAMAGES OF ANY KIND, however arising, including but not limited to those for the use of any products, loss of time, inconvenience, lost profit, labor charges, or other incidental or consequential damages with respect to persons, animals, business, or property, whether as a result of breach of warranty, negligence or otherwise whether fanciful or real.

All prices and design specification are subject to changes without written notice. This manual is copyright by Estoban Corporation. No part of this manual shall be copied without written permission from the Estoban Corporation. All directive may be sent to, 1643 Old Hwy 34 west, Fairfield, IA. 52556

Phone: 641-472-7643 E-mail: info@chimscan.net Website: www.chimscan.net

Enhancing/Continuing Education

We encourage all owners of Chim-Scan systems to continue their education and knowledge of the chimney and venting industries by attending these course as outlined below:

- ♦ CSIA continuing Certification programs
- ♦ CSIA Diagnosis and Documentation Seminars Levels 1 and 2
- ♦ F.I.R.E. Programs
- ♦ NFI Venting Technologies and Installer Classes
- ♦ WETT Programs - Canada
- ♦ “First Friday Seminars” held monthly at Estoban headquarters in Fairfield, Iowa

Precautions

- ♦ Do not operate Chim-Scan systems in **ambient** temperatures exceeding 122 degrees or lower than 14 degrees.
- ♦ Keep Units at room temperature at all times for proper operation. **Extreme temperature* changes** will cause erratic operation and can lead to repairs.
 - *Leaving unit in truck when temps are below 32° or above 80°. Best way to remember - If your Hot or Cold so is your Chim-Scan and treat your Chim-Scan like your cell phone if it's been Hot or Cold give it a bit to adjust to the job sites temp.
- ♦ Use the unit for appropriate levels of inspection. Do not use in wet areas
- ♦ Do NOT **CUT** the grounding prong on the power supply plug, or modify powers or cables this will void all warranties if done. Use caution for all 120-240V applications.
- ♦ Do not abuse the cable connectors. Never carry the camera by the cable, or yank them apart when disconnecting.
- ♦ Do not submerge the system in any water, or use outside while raining or snowing without proper protection.
- ♦ Do not break the seals on either cameras, monitors, LCD screens, or control boxes. THERE ARE NO USER SERVICEABLE PARTS INSIDE. ***If*** any seals have been broken ALL warranties are Void.
- ♦ For best application and proper visibility, it is best that the chimney be swept before scanning.

- ♦ Do NOT lay anything on top the LCD that may crush the screen. This will damage the screen beyond repair.
(NON-WARRANTY REPAIR)
- ♦ Do not force SD card into slot - this can cause the SD Card to break the shield on the SD Recorder and then fall into the controller.
- ♦ Do not (try to) remove the Monitor or SD Recorder, from case. You will cause damage and whole unit will need to return to Estoban for repair. All Warranties will be Voided!
- ♦ Use a stabilizer, at all times on the camera, whether it is a whisker, blowfish, or soft bristle chimney brush.
- ♦ WARRANTY IS VOIDED IF A STABILIZER IS NOT USED
- ♦ Because of the expense of the units, its important to
- ♦ list the system on your business insurance
- ♦ under Inland Marine for theft and damage.
- ♦ Look for and record the serial number on this equipment and
- ♦ keep it in a safe place.

Video Scanning / Interpretation

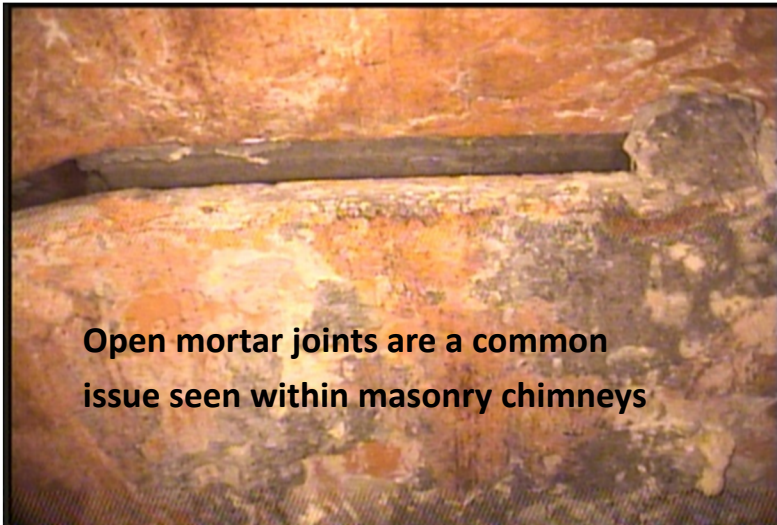
Video scanning is a procedure, more than a technique.

Following a path from one chimney section to another, following a procedure, makes the scan a complete close up picture of how the chimney was built, and what is taking place within the chimney. Each chimney tells a story, even the most sooty ones.

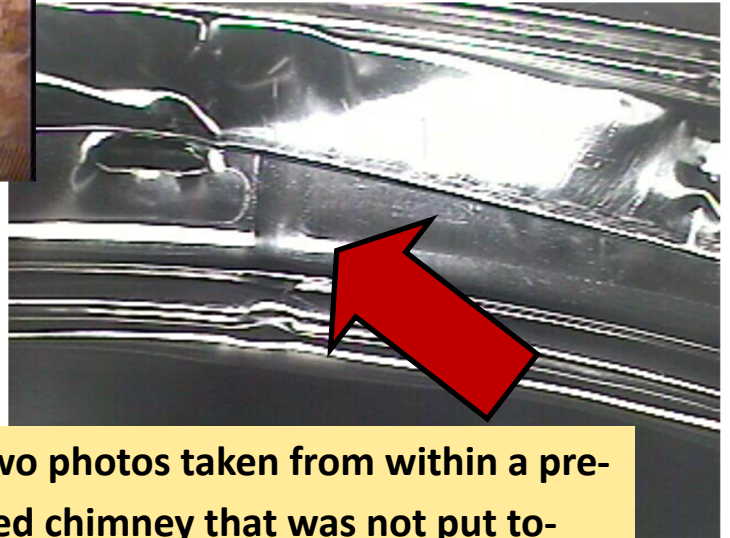
The camera position or angle play an important part in familiarizing yourself with the new perspective. The combo camera system which includes the light house and the enviro, offers the viewing within the chimney. First start with the enviro looking up inside the chimney. This provides you with the ability to look at the chimney interior without “Too Much Information”. If the system you purchased is the cheese bit bracket and Enviro camera or the Lighthouse only then your imagery is set for 90 degree viewing only, which were designed for greater detail of the chimney interior wall.

The basis of your opinion will need to be from a documentable source. Once the operator becomes familiar with the equipment and the visual perspectives the system reveals, guidelines set forth from the individual building codes and use of the inspection guidelines set forth in NFPA 211(2016) Chapter 14 and Chapter 15 will be of great benefit.

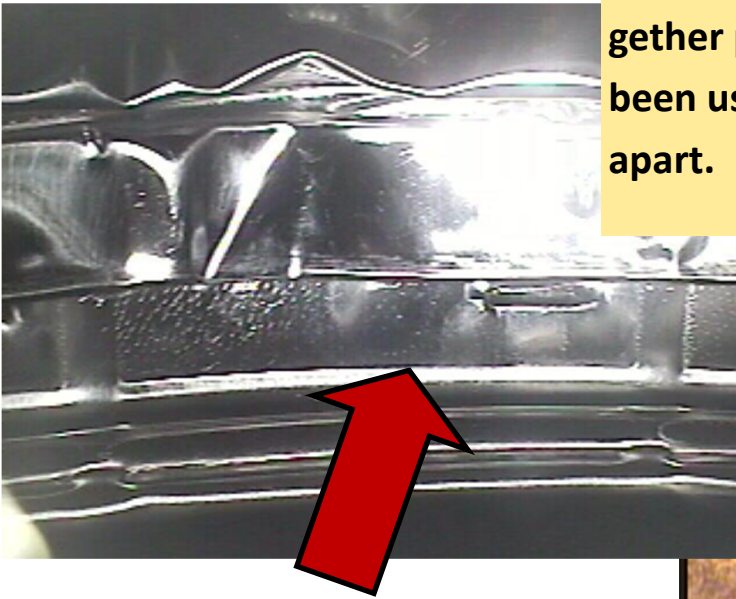
Also, you will need to understand the manufacturer’s installation instructions, concerning installations of their products, especially prefabricated fireplaces and chimney relining systems, whether they may be stainless steel, resurfaced systems or cast in place lining systems.



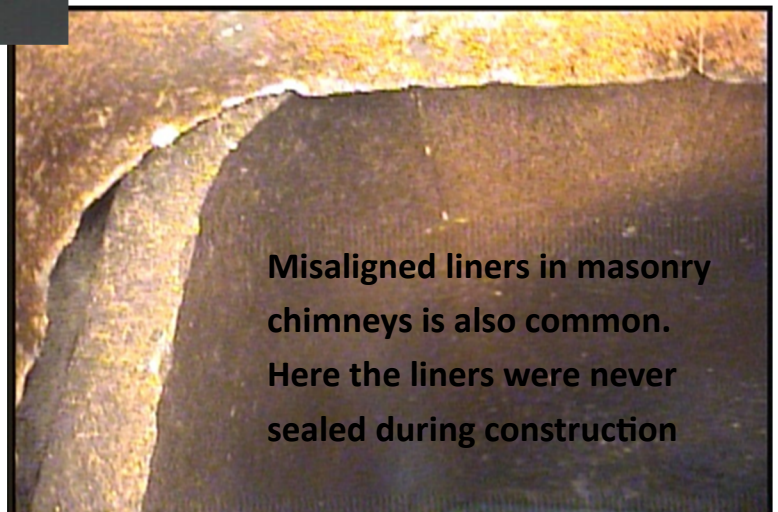
Open mortar joints are a common issue seen within masonry chimneys



These two photos taken from within a pre-fabricated chimney that was not put together properly. This chimney has never been used. Its brand new. The sections are apart.



the Interior



Misaligned liners in masonry chimneys is also common. Here the liners were never sealed during construction

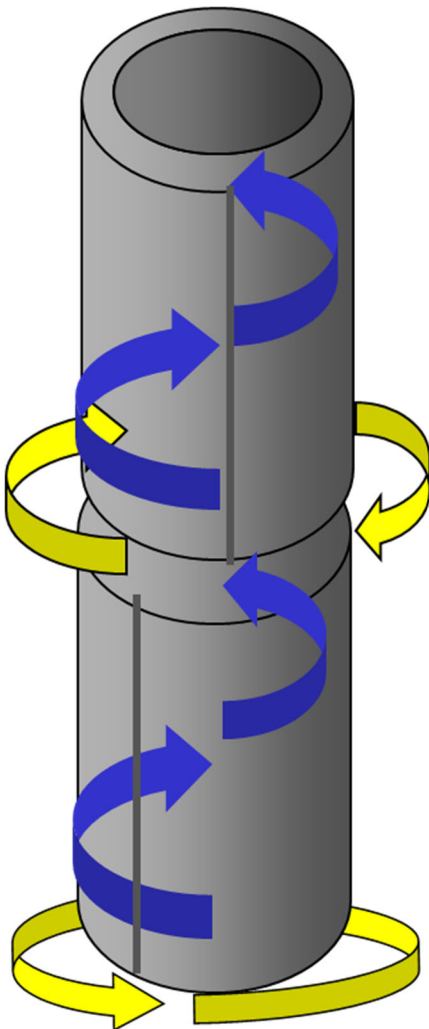
Scanning Pattern for Round Liners

There are two ways to create a procedure for scanning prefabricated or metal liners.

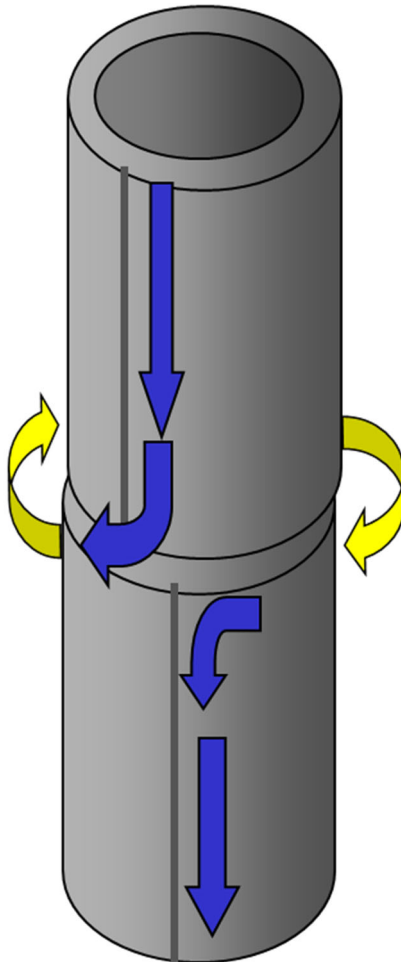
The first is to use a barber pole rotation within the flue. The other is to follow the seam of the liner.

It is best to combine the two approaches, do one going in one direction the other on the return. This way all the seams and joints are accounted for and if any abnormalities appear on the side wall of the liners, they should be seen

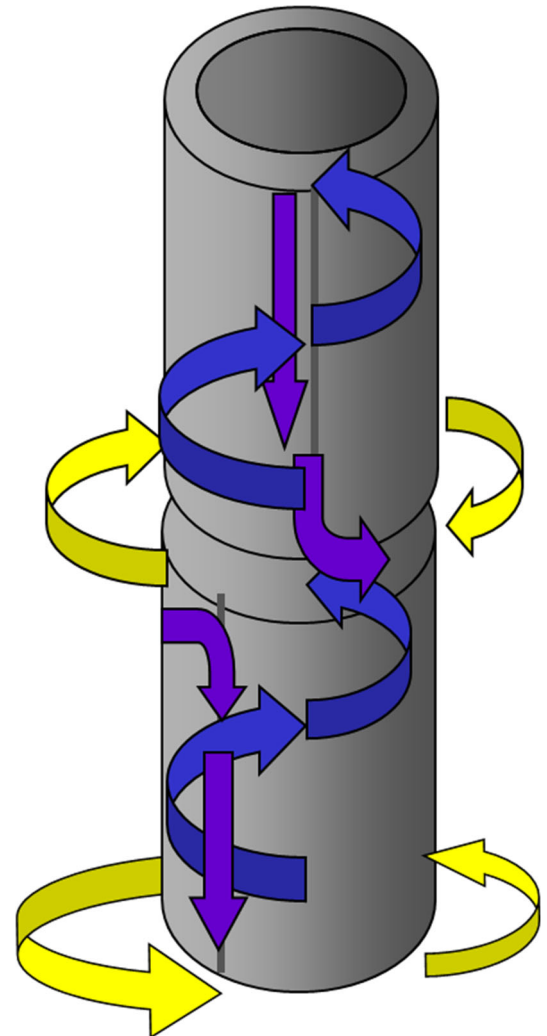
Barber Pole



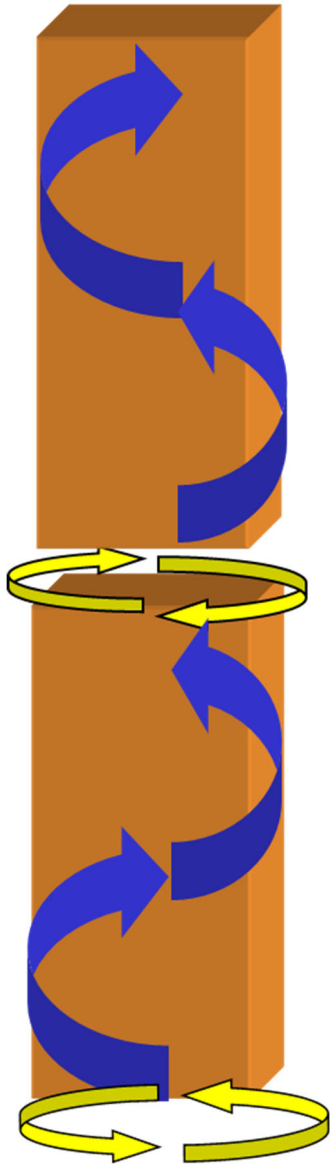
Follow The Seam



Combination



Scanning Pattern for Square & Rectangle Liners



Scanning masonry chimneys using a barber pole rotation within the flue. This works well in square chimneys and round liners also. Rotate in a Clockwise motion until you reach a joint, review it's condition by rotating in a counter clockwise motion. Then reverse the process for the next liner. This keeps the cable free from the chimney rod and stops twisted cable issues. Follow the same process until you reach the top or bottom.

Most of the defects within masonry liners are between the liner sections. Open mortar joints, protruding mortar joints were the builder of the chimney place too much mortar between the liners creating a restriction to flow.

Other times the liners are cracked, whether from thermal shock or a chimney fire. Each defect allows air from outside the liner to enter into the chimney interior. This dilution air does two things, one it reduces the temperatures within the chimney and two it reduces draft. Both are harmful to the appliance connected to it and can create a hazardous condition. Please use the resources from the NFPA 211 Chapter 14.9 and the IRC code book Chapter 18 concerning the placement of chimney liners and the condition they should be found.

Scanning Procedures

The first step in creating a thorough scan is a procedure. We will go through 3 different degrees/angles at which you can scan.

*Zero degree (straight forward)

For front view or zero degree, place the stabilizer behind the camera head, insert into the chimney or vent and move forward. Move the camera at a rate which will allow the client to comprehend the imagery

For sectional liner or pipe slow down or stop at each joint for further study, be sure that it is connected properly and locked. The liner should not have any bends or tears.



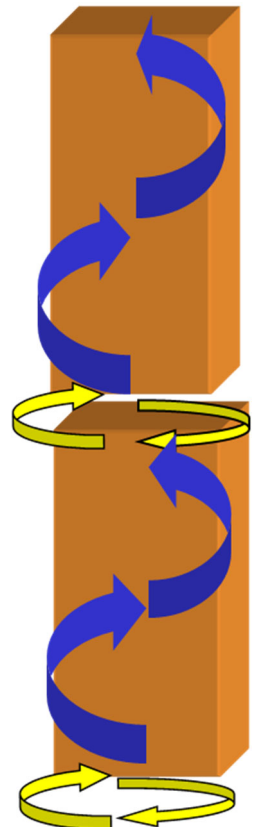
Continue to the next section. The sides of the pipe will be on the outside corners of the screen.

*For 90 degree

With the appropriate stabilizers, on the top of the camera, push the camera into the chimney and evaluate the thimble-cleanout area, or fireplace damper and acclimate yourself to the interior flue area.

Move the camera in a circular motion while pushing the camera up the flue. Since your view will be mostly the full side of the liner, be sure to view all sides before moving into the next liner.

Once you reach a joint be sure to spin the camera 360 degrees until the complete joint has been viewed. Check to see whether the liners are intact (Void of any cracks) and aligned with the next liner. If they are misaligned, allowing infiltration air or condensate from leaving the liner cavity, note the defect. All building



codes do require that the flue liners be stacked on top of each other, sealed with the appropriate cement and struck smooth in the interior of the liner. **If this is not found, and the joint is open or will allow the products of combustion to escape to the interior of the chimney, this should be noted and inform the client.**

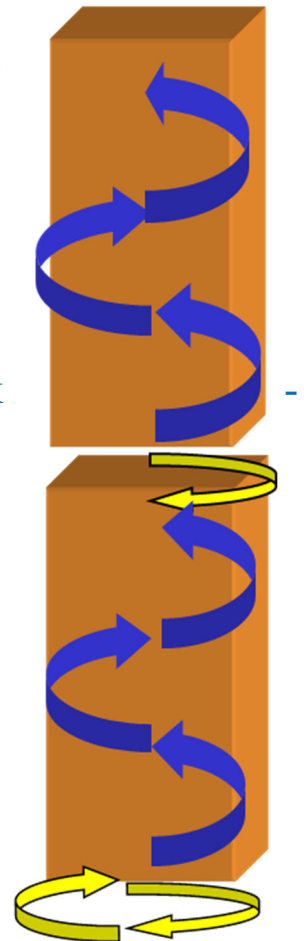
***For 90 degree**

With the appropriate stabilizers, on the top of the camera, push the camera into the chimney and evaluate the thimble, cleanout area and fireplace damper, acclimate yourself to the interior flue area.

Move the camera in a circular motion while pushing the camera up the flue. Create a barber pole fashion view of the liner.

Once you reach a joint be sure to spin the camera 360 degrees until the complete joint has been viewed. Then reverse the spin direction and continue to the next liner joint. This will keep the camera cable from becoming twisted onto the Kwik Lock rods. (Regular rods right hand only)

Be sure that the joints are intact, and placed on top of the next liner squarely. If not be sure to note the defect.



Scanning From the Bottom Up

Fireplace scanning using a Blowfish / Whisker / Brush

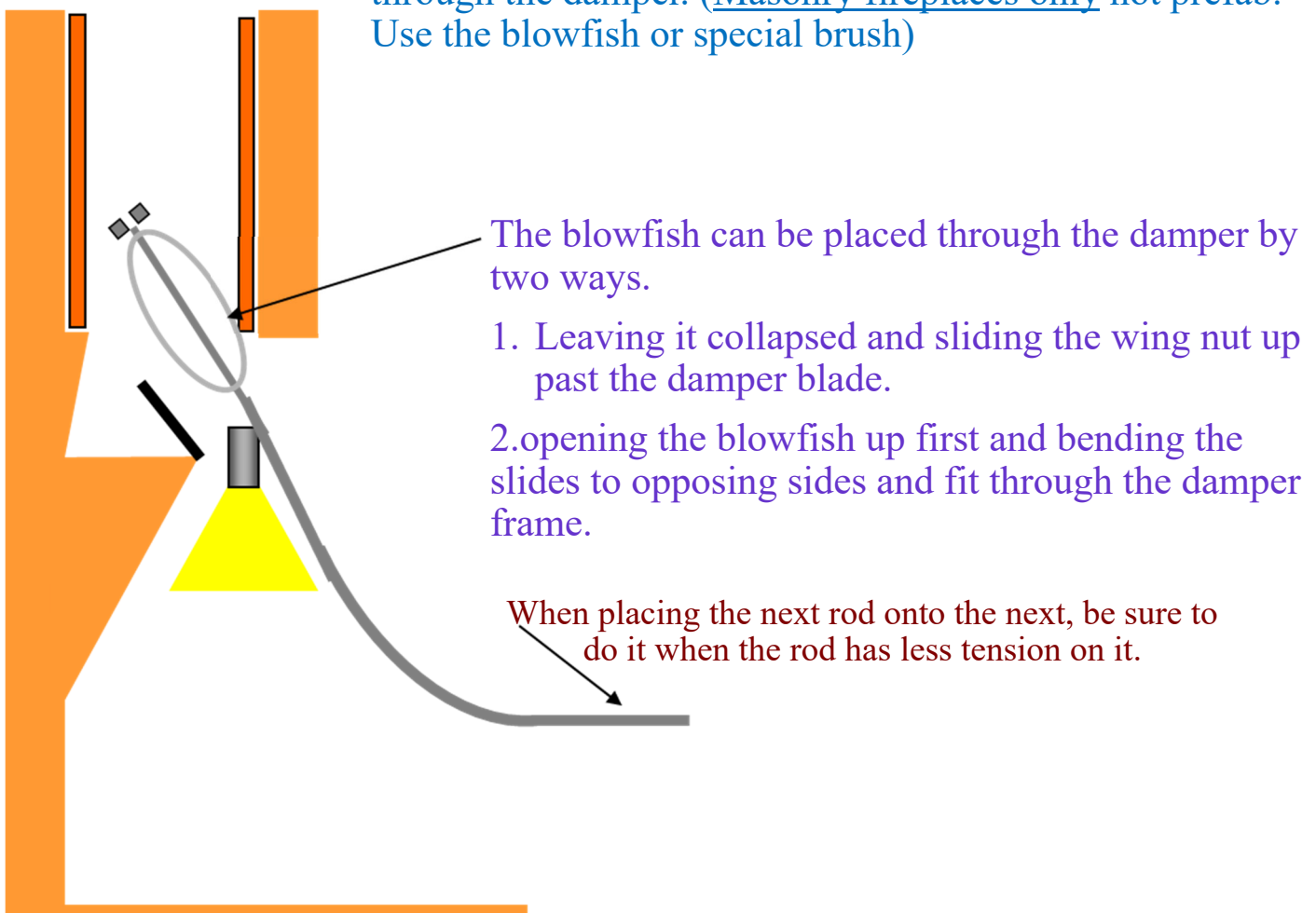
Place the camera below the blowfish, unless you use Rovac/Button-lock rods then it goes behind the camera. Let the wheels hit the back wall of the smoke chamber, or the bottom of the first liner.

Angle the camera to pass the damper and begin the scan.

When bringing the camera through the damper, remember to turn it to the side so the lights will not rub on the damper frame. If you have a Lighthouse camera, wrap your hand around the camera and guide it passed the damper, this will help lengthen the life of the protective lens.

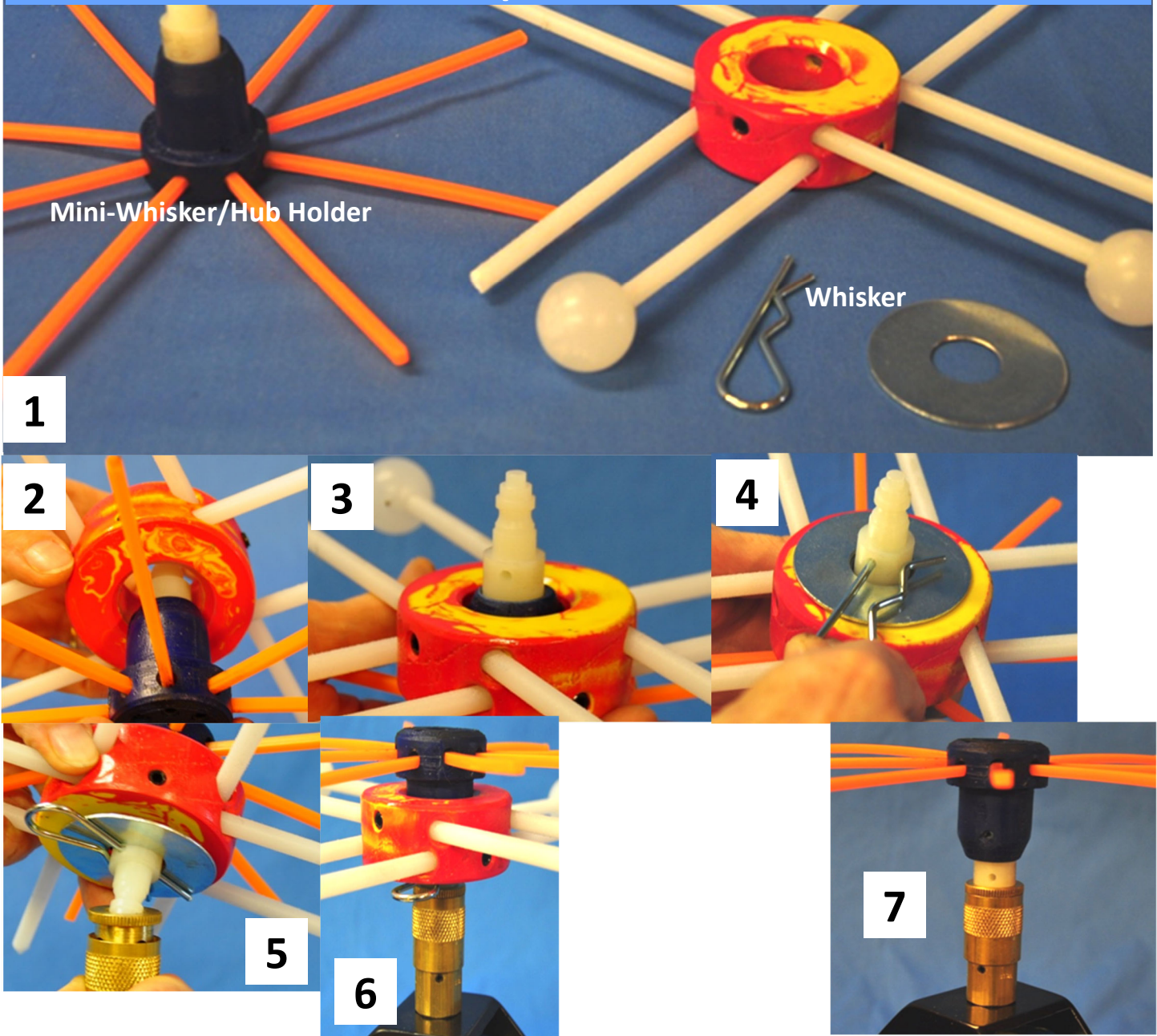
When using the whiskers or brush, the procedure is the same, only you may need to guide the camera into the first flue liner.

Using whisksers, the operator may wish to take the whisker hub off the camera and reattach it above the damper. Or slowly push the whiskers through the damper. (Masonry fireplaces only not prefab. Use the blowfish or special brush)



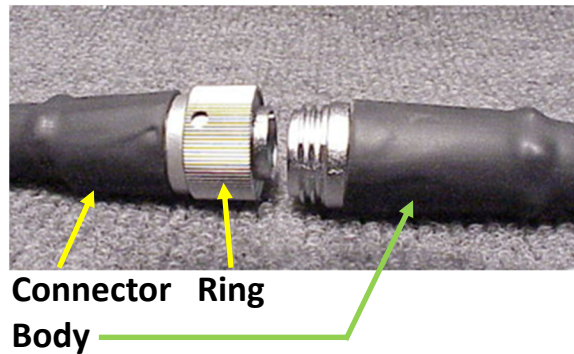
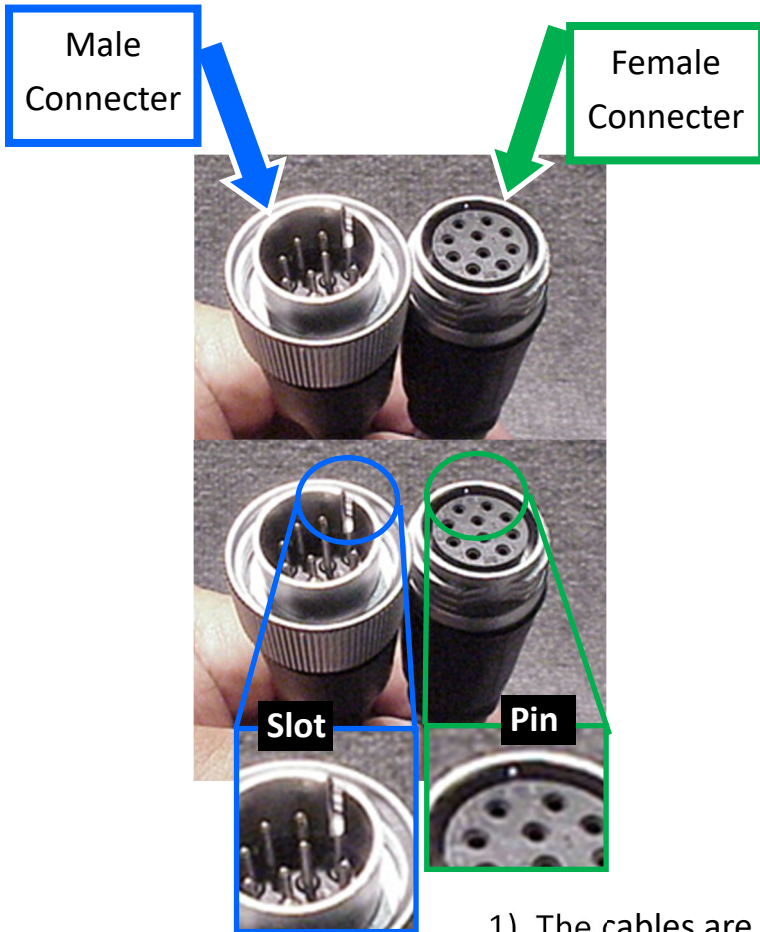
STABILIZERS — **All warranties will be voided if Either the Whisker, Mini-Whisker, Whisker Combo, Blowfish, or special brushes supplied by Estoban are not used.**

Whisker and Mini-Whisker/Hub Holder AKA: Whisker Combo



1. Remove the clip pin from the Mini-Whisker Hub.
- 2 & 3. Then place the whisker on the hub.
4. Place large washer on hub and insert clip pin.
- 5 & 6. Place the hub on the female connector, on top of camera. Then you can adjust white whiskers to the size of the interior liner or the chimney using your T-Wrench.
7. The mini-whisker can be used by itself for Pre-Fabs or smaller flues.

Cable Connectors



- 1) The cables are set to connect in a prescribed way.
- 2) Align the Slot and Pin, push the connectors together, and turn the locking ring.
- 3) Be sure not to push too hard when setting them together.
- 4) To take apart **loosen the ring first then** pull the connectors apart.
- 5) **Do not twist the connector body**, only the ring should turn.

Start Up Procedures

- ◆ Open the latch to the case
- ◆ Remove camera from clip pins or from under Mini-Lid.
(This will depending on the type of type you have.)
- ◆ The cable will be connected a upon arrival, so if you wish to un do it please see page
 - ◆ Pull the cable out as you do the scan. When completed, use the knob on the top of the reeler to return cable to reeler
- ◆ Turn unit on. (See page 16)
- ◆ Verify Date and Time.
- ◆ Attach Stabilizer(s) to camera and begin Scanning.



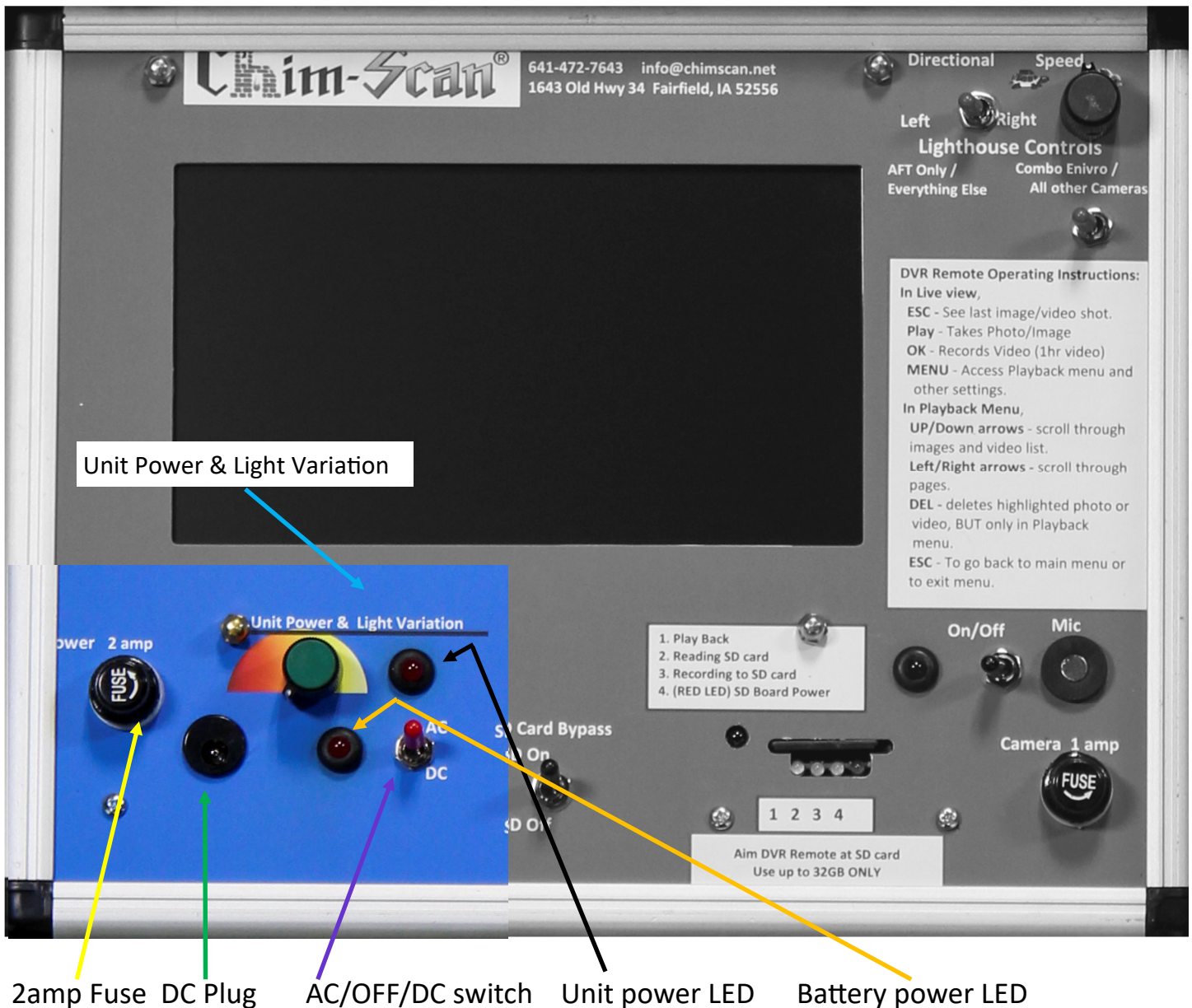


Series 200 layout

The Next pages break down the controller into different sections and explains with each switch and button does.

We'll go through combinations of switches and what cameras they work with.

Remember if your unit doesn't have a switch it means that it wasn't necessary for your type of camera.



- * Plug the power supply system into a 120 volt grounded receptacle (or the 12VDC battery). Check if your AC/OFF/DC switch is in correct position. The light will come on when battery is connected only.
- * Rotate the power knob clockwise to power the controller. LCD monitor will come on and Monitor must stay on AV1. AV1 will display in top right corner of screen when you turn unit on.
- * (The two center buttons on LCD change it from AV1 to AV2). The system is wired to use AV1. AV2 will show a blue screen.
- * **Use only appropriate charger for style and type of battery.**

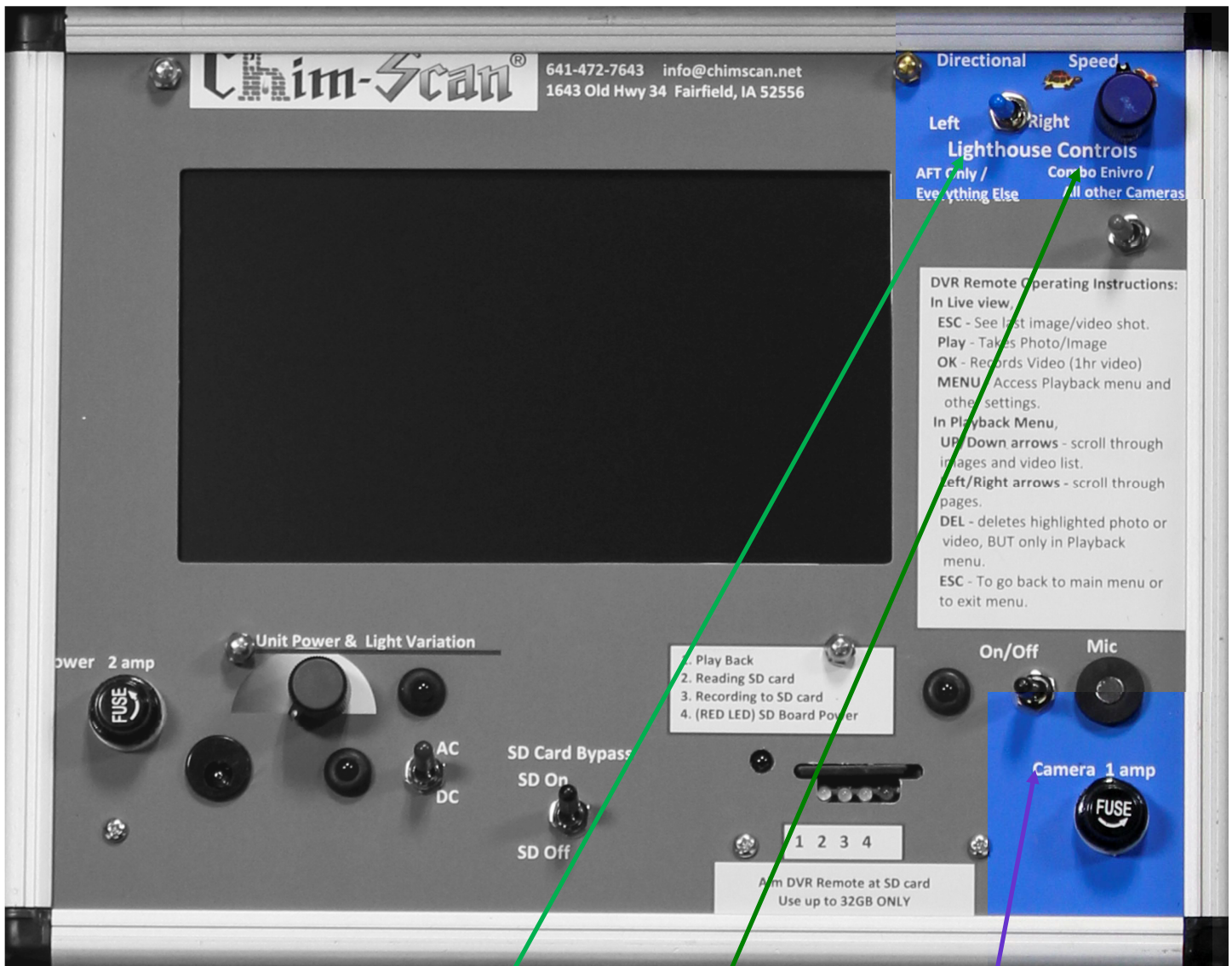
The 2Amp fuse helps control the flow of Electricity to the unit. If it 'Pops' that means the unit has received a surge. Should this happen, turn off the unit, replace the fuse, and turn unit back on. If it doesn't turn on, check the extension cord, power strip if your not plugged directly into the wall. If It still doesn't turn on, Call 641-472-7643



SD Bypass Switch

The **SD Bypass switch** allows you to bypass the SD recorder should it have issues, you won't be able to snap pictures or record video without using a external device like your Phone or Digital camera. But you will be able to keep scanning until the SD resolves it's issue or you call 641-472-7643

How to use the SD recorder is on Page



Lighthouse Switches: Rotation Direction

Rotation Speed

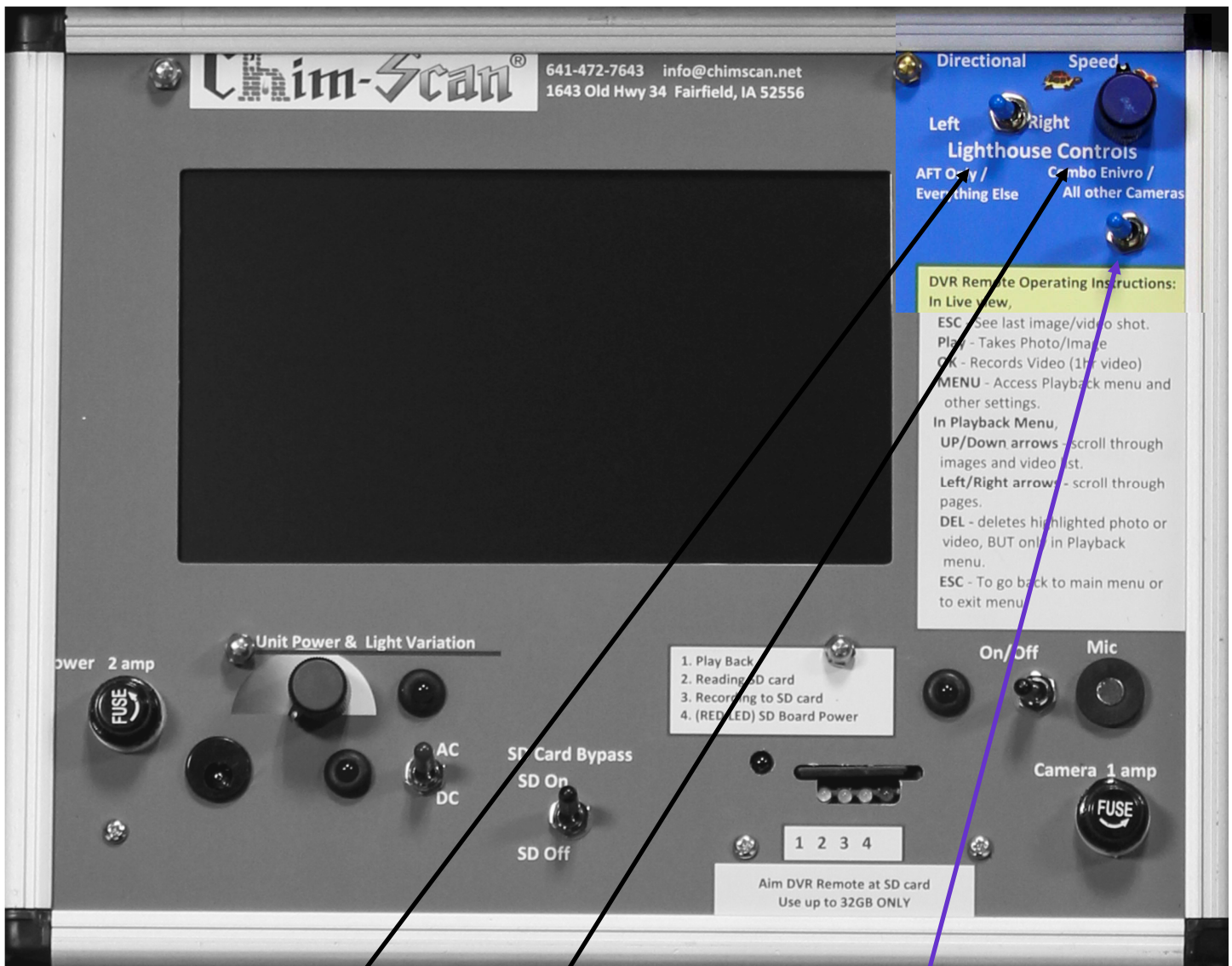
1Amp Fuse

The Lighthouse switches control the Lighthouse camera and only the lighthouse camera.

The **Rotation direction** switches the rotation of the camera either left or right. When the switch is in 'center or stop' position, the camera won't rotate.

The **Rotation Speed** knob controls the speed at which the lighthouse rotates. It's only works on Lighthouse camera. When it's in 'Off' position, the camera with do a complete rotation in 10seconds. Once you turn in the switch 'on' it rotate faster but you'll still be able to snap good photos; even when it's at full speed.

The **1Amp fuse** is to protect the camera, from interior or exterior shorts. If you all-of-a-sudden get a blue screen, but have Date and Time still displayed in the top right corner, check the 1Amp fuse. If you replace it and you still have a Blue screen, check your cable to camera connection. If you still have a blue screen call 641-472-7643.



Lighthouse Switches: Rotation Direction Rotation Speed Cam1/Cam2 Switch aka: Combo Switch

In this Section We're going to add the Combo switch to the Lighthouse switches. This is necessary if you have a Combo Camera set up aka: the Enviro looking straight up and the Lighthouse Below looking at the sides/joints.

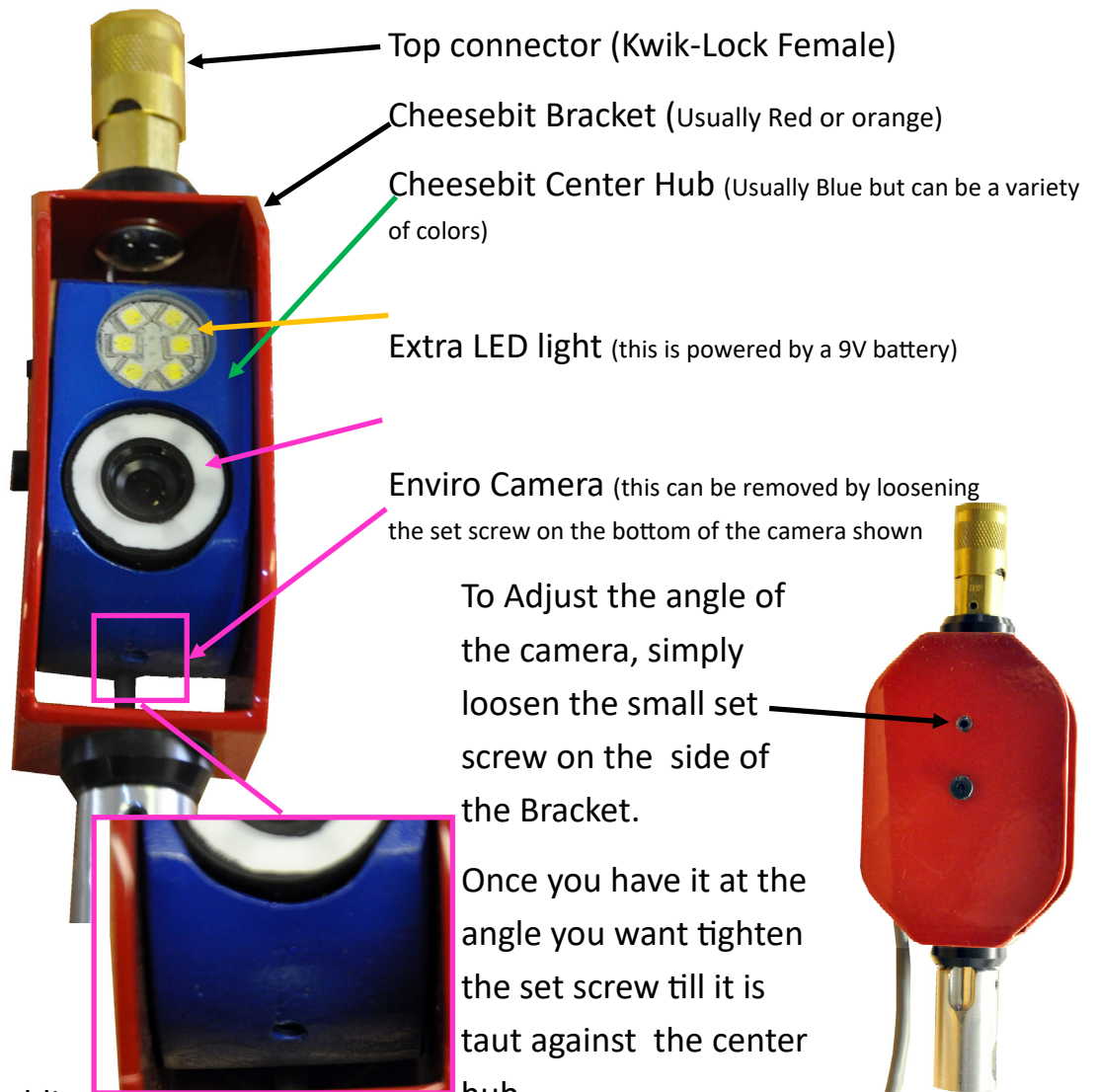
The **Lighthouse switches** work the same way as they do on page 18.

The **Cam1/Cam2 switch** flips between video signals. Cam 1 is the Enviro video feed and Cam 2 is the Lighthouse video feed. There may be a 2 sec delay when you flip the switch from one camera to the next, so don't panic. A bonus is that if your recording a video with the built in SD recorder (if you have the SD recorder) it will keep recording when you flip the switch so you don't have to start a new video when you flip from the Enviro view to the Lighthouse view.

Enviro Cheesebit Camera



We custom make each LED light ring; slight variations may occur.



The Cheesebit has an additional LED light, to turn the light on and off simply push/pull the switch on the top of the center hub.

DO NOT OVER TIGHTEN!!

When it's time to change the 9V battery,

You will loosen all the screws in the bracket and remove the center hub.



When putting the hub back

in the bracket make sure you put the Battery towards the side with only 1 screw - shown here



Lighthouse Camera

Lighthouse Camera rotates a continual 360°, using the Left/Stop/Right switch in the upper right hand corner of the control box. See page 18.

Depending on whether or not you have the Combo setup will determine what is on top of your camera

If you have a combo, it should look like this.

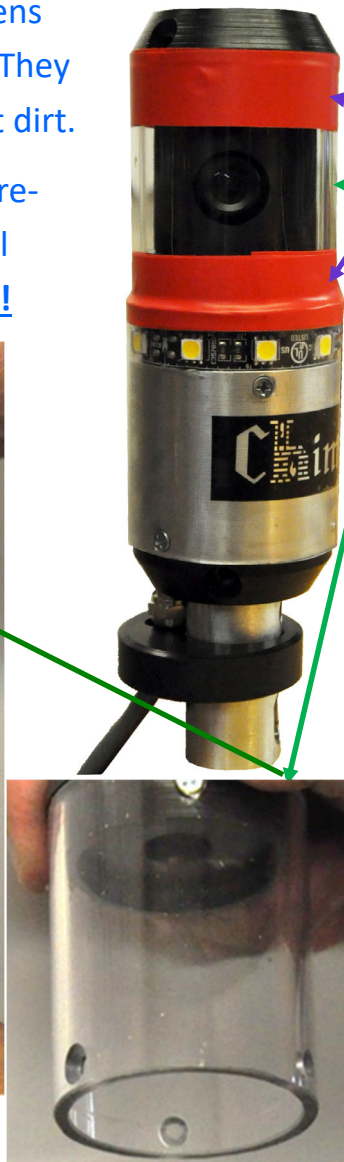


If you have the lighthouse by itself you'll have the Female Kwik-Lock connector



At the top and bottom of the Lens are 2 pieces of Electrical tape. They serve a extra protection against dirt.

Should they become damaged replace them with more electrical tape. **DO NOT USE DUCT TAPE!!**



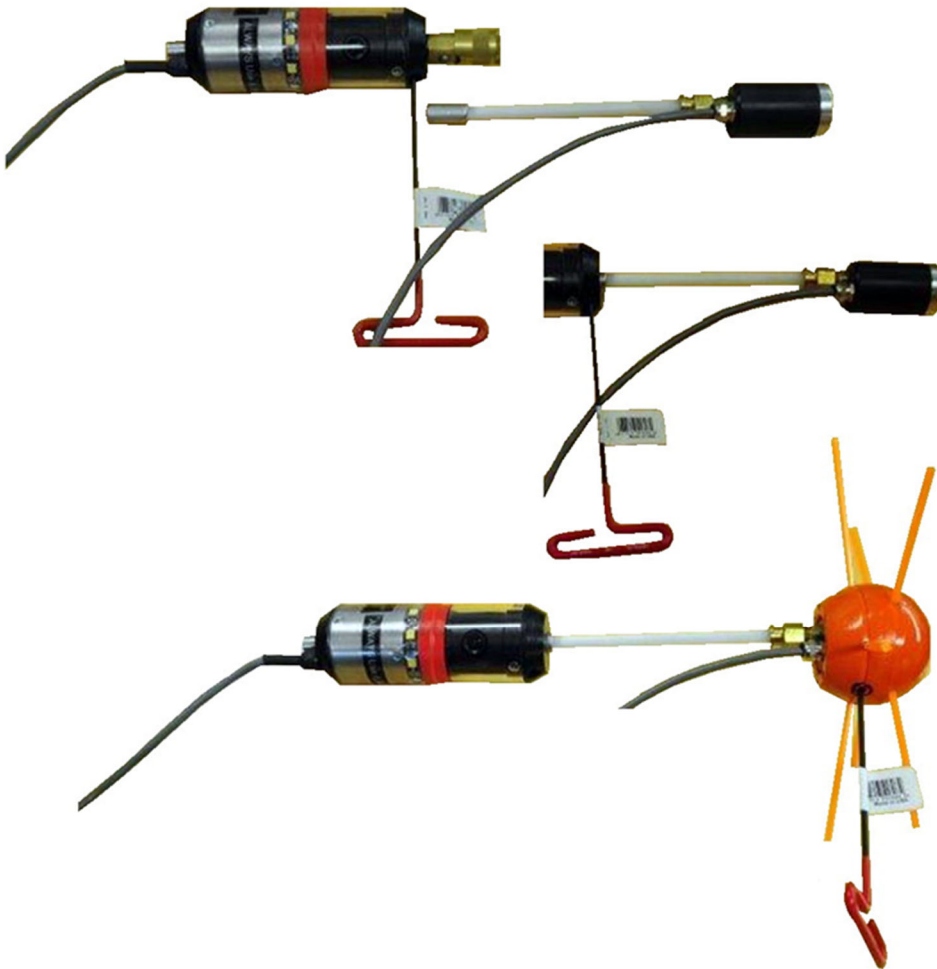
Electrical Tape*

LENS (aka Outer Lens or Protective lens)

When the Outer lens becomes scratched it can be replaced.

1. Under the Electrical tape are 6 screws, (three top/three bottom) simply remove the electrical tape.
2. Unscrew the bottom 3 screws
3. Remove the outer lens.
4. Place new lens on Camera and put the 3 screws back in.
5. Now remove the top 3 screws from the old lens.
6. Take the top of camera put it on new lens.
7. Replace the top 3 screws
8. **Put electrical tape back on the camera, over the screws. Top and bottom.**

Combo or Enviro/Lighthouse set up



To use both camera's at once.

1. Use Tee wrench to remove Kwik-Lock female connector

2. Insert short white rod making sure the flat side is toward the set screw

3. Tighten set screw

4. Attached Enviro to short white rod; if not already attached. Also this will go easier if the cables are not connected to the Y-adaptor

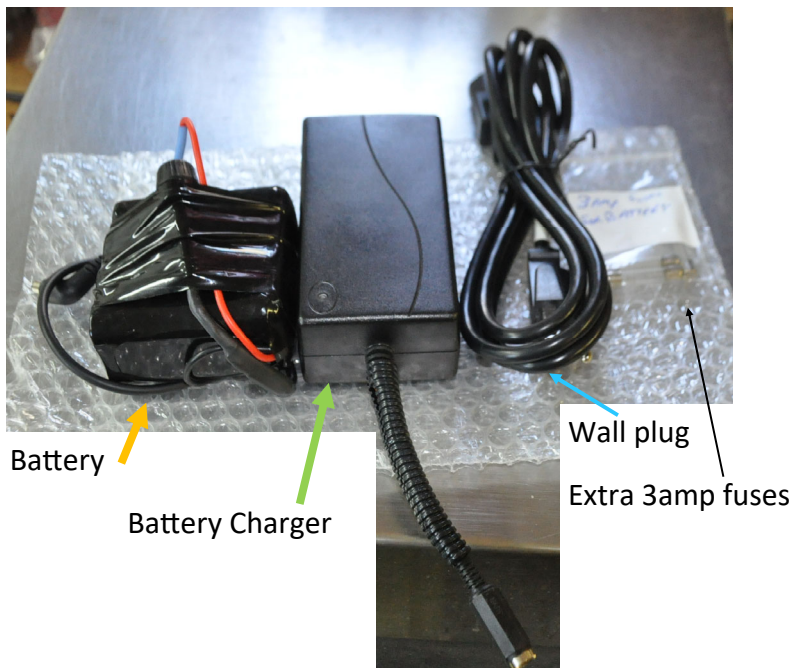
5. Slide Modified Dryer Ball on to Enviro and tighten set screw.

**REMEMBER: ONLY Tighten Set screws till snug,
DO NOT over tighten. Over tightening will lead to issues in the future.**

Optional Keyboard

<u>Keyboard Commands</u>	
Key Press	Action
ESC	Exit editor mode
F1	Character blink toggle
F2	Character black background frame toggle
F3	Character color cycle (Blue > Green > Cyan > Red > Magenta > Yellow > White) <i>Self-generated screen mode only</i>
F9	Screen mode toggle (overlay > self-generated) <i>Overlay mode requires valid input video source</i>
F10	Screen background color cycle (black > blue > green > cyan > red > magenta) <i>Self-generated screen mode only</i>
F11	Screen translucent characters toggle <i>Overlay screen mode only</i>
(CTRL)(SHIFT)F12	Clear Screen
Up Arrow	move cursor up one row
Down Arrow	move cursor down one row
Left Arrow	move cursor left one column
Right Arrow	move cursor right one column
(CTRL) Up Arrow	Shift screen characters up one pixel
(CTRL) Down Arrow	Shift screen characters down one pixel
(CTRL) Left Arrow	Shift screen characters left one pixel
(CTRL) Right Arrow	Shift screen characters right one pixel
Home	Moves cursor to the top left corner of screen
End	Moves cursor to last typed character on current row
Insert	Insert a space at the cursor and shift the text to right
Delete	Delete the current character by shifting the text to the right of the cursor left
Enter	Move the cursor to the first column on the next row
(ALT) xxx	Insert a special character - hold down the Alt key, type a special character decimal value, and release Alt key.

Optional Battery Pack



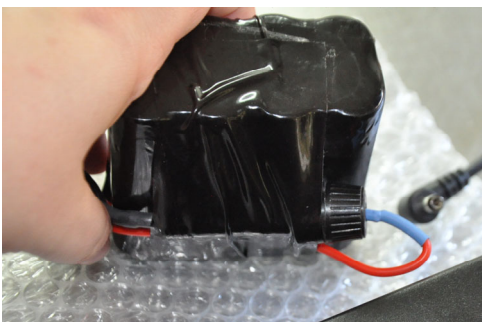
Battery lasts for 4 to 6 hrs. for every 8hr charge.

To Charge Battery:

1. Take the small plug from the Battery and insert it receptacle in the Battery charger
2. Then plug in the Wall plug into the Battery Charger
3. Plug Wall Plug into 120V outlet

For best results charge battery for a full 8hrs once a week if using on a daily bases.

Battery will hold it's charge over 2 weeks of non use.



If you blow the fuse on the battery:

1. Turn off Chim-Scan and disconnect the battery
2. Change 3amp fuse in Battery, then check and change (if necessary) the 2amp and the 1amp fuse for the Chim-Scan
3. Power up the Chim-Scan with the Wall plug first to make sure it's operating properly. Then plug in battery to Chim-Scan and turn on like normal

If the Chim-Scan doesn't turn on or doesn't seem right, Call 641-472-7643 for tech support.

How to Operate SD Recorder

SD Recorder ★

SD Recorders IR Eye ★

In field Directions for Remote ★

What each LED under the SD card means ★

Remote

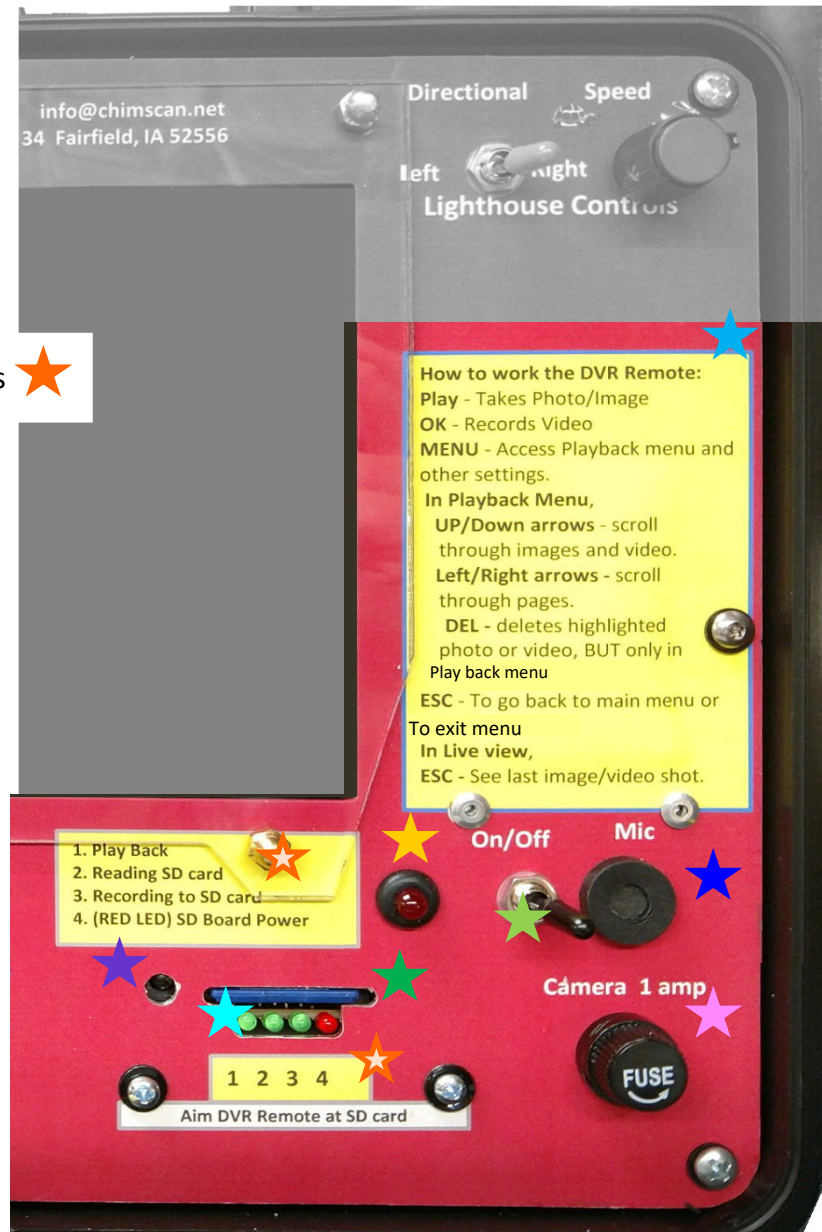
Micro- phone

Mic On/Off

Mic On LED

1Amp Fuse

SD Recorder LEDs



How to Use SD Recorder Remote

You must have the remote to take Photos or Video

If you've lost the remote call 641-472-7643 to order a replacement for \$14.95

- ◆ Press OK to start recording a video.
- ◆ Press STOP to stop recording.
- ◆ Press PLAY to take photo.
- ◆ Press ESC to see last photo or video taken.
- ◆ Press DEL. to delete photo or video.
- ◆ Press ESC again to enter Playback Menu.
- ◆ Press Menu to return to Live Feed in Playback menu.
- ◆ Press Menu when viewing Live Feed to view Menu Options and Playback menu.

- ◆ All settings are pre-set by us for Optimum viewing and recording.

- ◆ In Playback Menu,
- ◆ Use the Up/Down Arrows to navigate page.
- ◆ Use Left/Right Arrow to move forward or back pages.
- ◆ To view and Photo or Video in playback menu, press OK.
- ◆ To Exit, press ESC.



What does Live Feed Mean:

It means you're viewing what camera is seeing right then.

SD card insert and retrieval



Due to continuing improvements, actual product may differ slightly from photo.

How to capture your images or video

When you press PLAY to take a photo, you only see a quick glitch in screen. Example you may see 12 secs then to turns to 14 secs.

You CAN'T capture photos while your recording a video

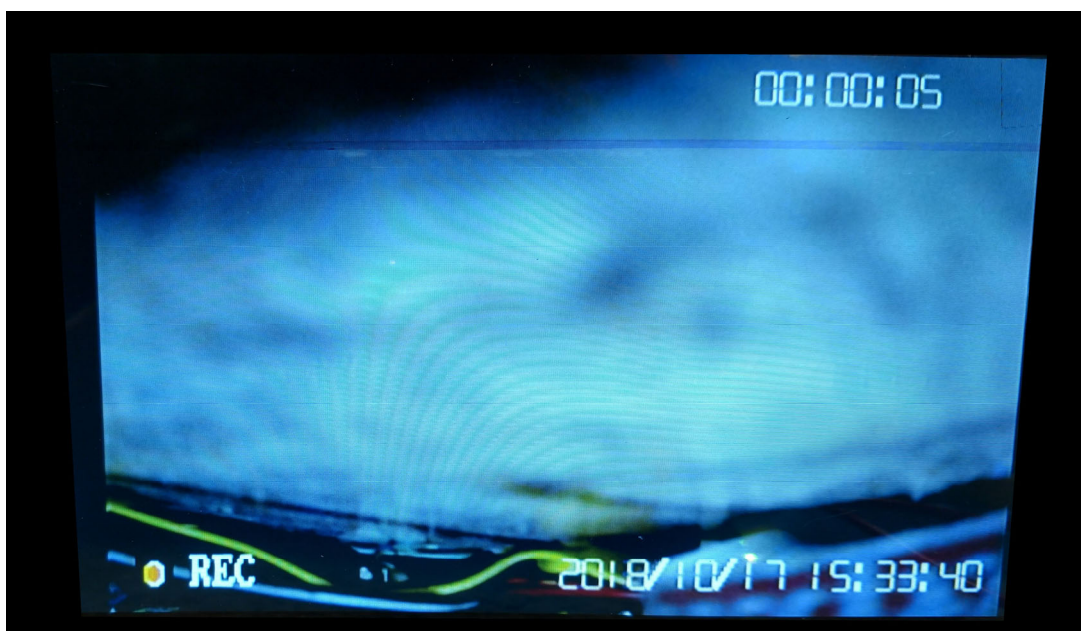


This is the screen view when you're recording a video.

Press OK to record video.

The SD recorder will record for 1 hour then stop.

To stop the recording at any time press STOP.



How to preview your images or video

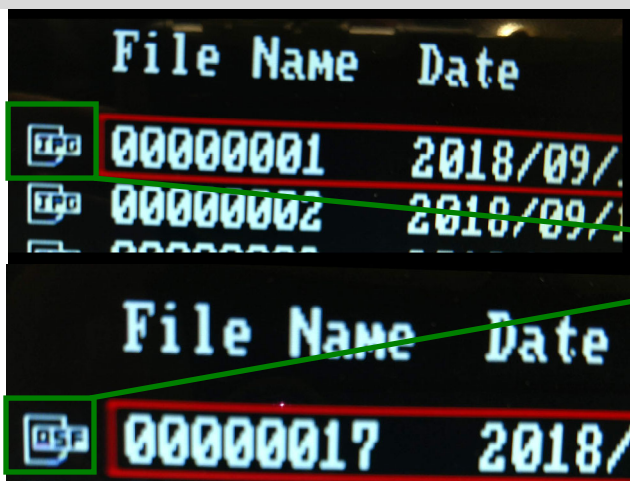
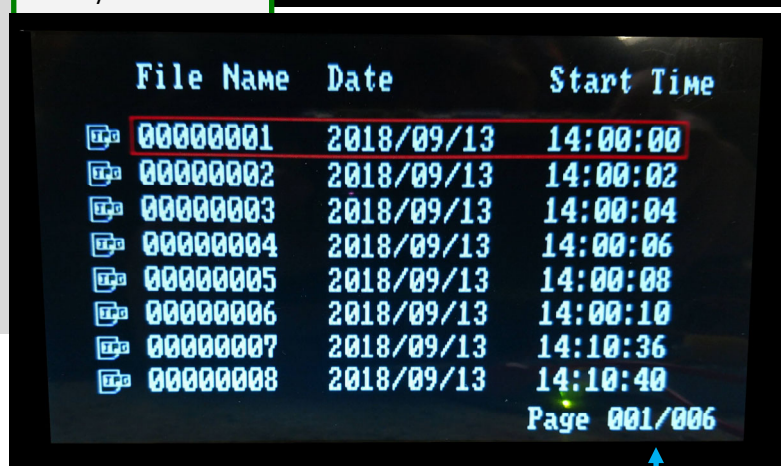
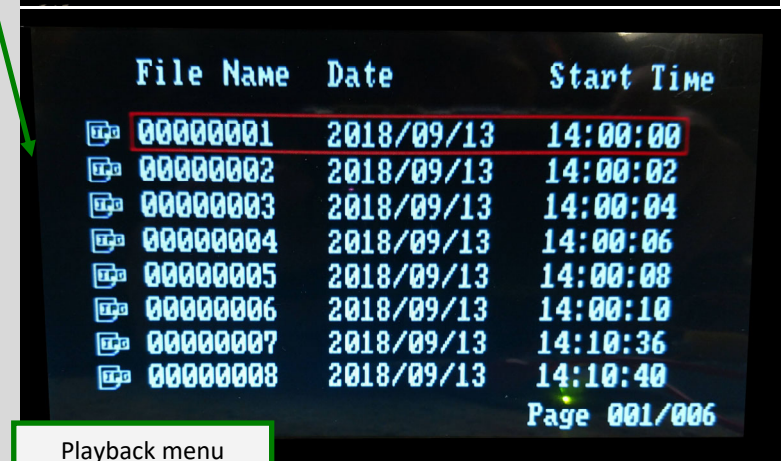
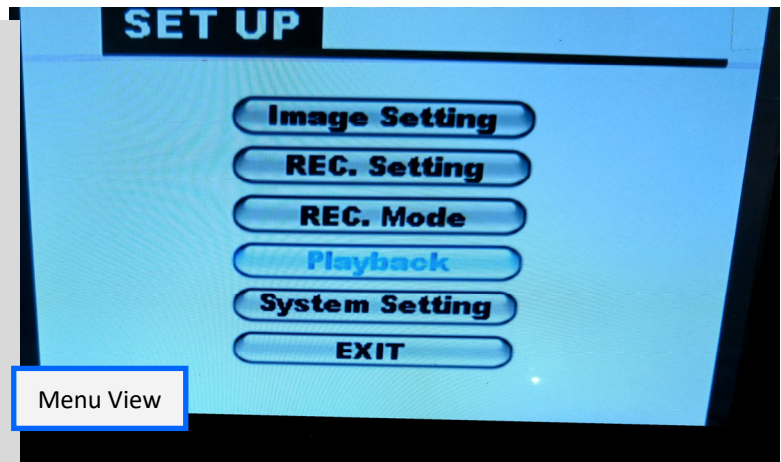
To view photos and video, there are 2 options.

Option 1:

1. Press Menu
2. Use Down Arrow to move to Playback option.
3. Press Ok and now you are in the Playback Menu.

Inside the Playback Menu

1. Use UP/Down Arrows on the Remote to scroll through photos/videos.
2. To view a photo/videos - Press OK.
3. To go to next photo/video - Press ESC.
4. Each page of Playbook Menu hold 8 photos/videos.
 - A. To Scroll through pages use Left/Right Arrows.
5. To Exit Playback Menu - Press ESC or Menu.
 - A. ESC will take you to back to Menu.
 - B. MENU will take you back to Live Feed.



This is a Photo - JPG = Photo

This is a Video - ASF = Video

How to preview your images or video cont.

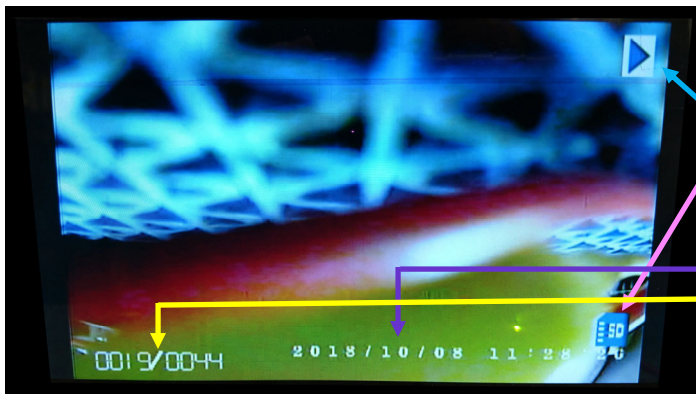
Option 2:

1. While viewing Live Feed—Press ESC.
2. This will take you to last Photo/Video taken.
3. To return to Live Feed - Press ESC, then Menu.

A. When you press ESC it takes you to Playback Menu.



How to tell if you're looking at a photo or a Video



Play Icon' signifies that the recorder is in playback mode

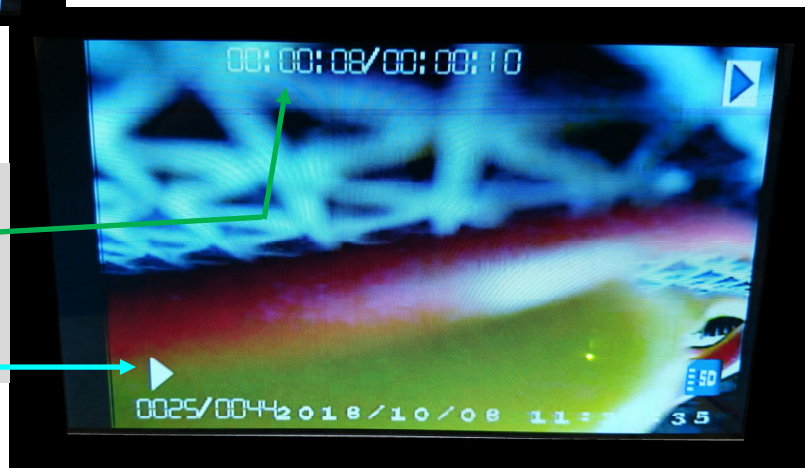
SD Icon

Date and Time photo was taken

of photo

Videos will show the same things as still Photos but with the addition of Video Length.

Play icon in video mode will mean Play - It turns into a pause symbol when the video is playing .



Changing Battery for Time & Date

Occasionally you will need to replace the two AA batteries to keep time and date stamp accurate. This box is either under the controller or on the left side of the controller.

- Slide Door of box down to access batteries.
- Being careful not to pull wires from controller, replace the batteries and put all back in place.

How to Delete Images/Videos

You can only delete photos/videos when you're viewing them.

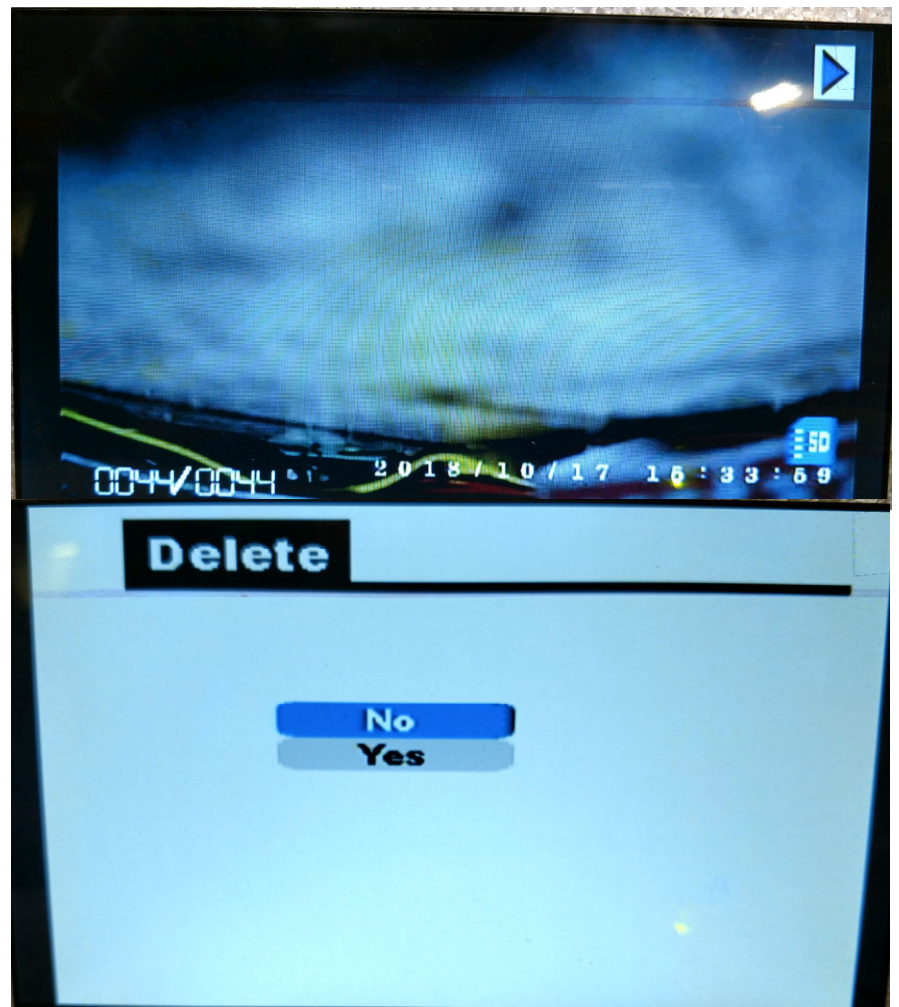
To Delete photos/videos:

- 1 Go in to Playback menu.
2. Press OK to select the photo/video you wish to delete.
3. Press DEL.
4. Use Down arrow to highlight yes.
5. Press Ok delete photo.

If you need to delete multiple photos:

Option 1 - Take card out of Chim-Scan, put it into a computer, copy photos/videos to a folder, then delete.

Option 2 - Use the above procedure to delete photos/videos one at a time while keeping card in Chim-Scan.

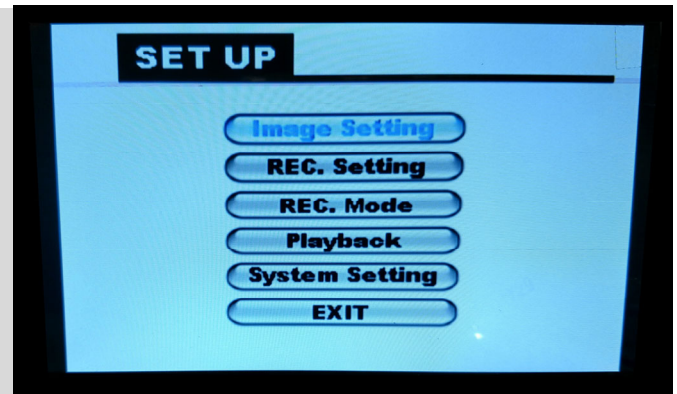


Navigating SD Recorder Menu

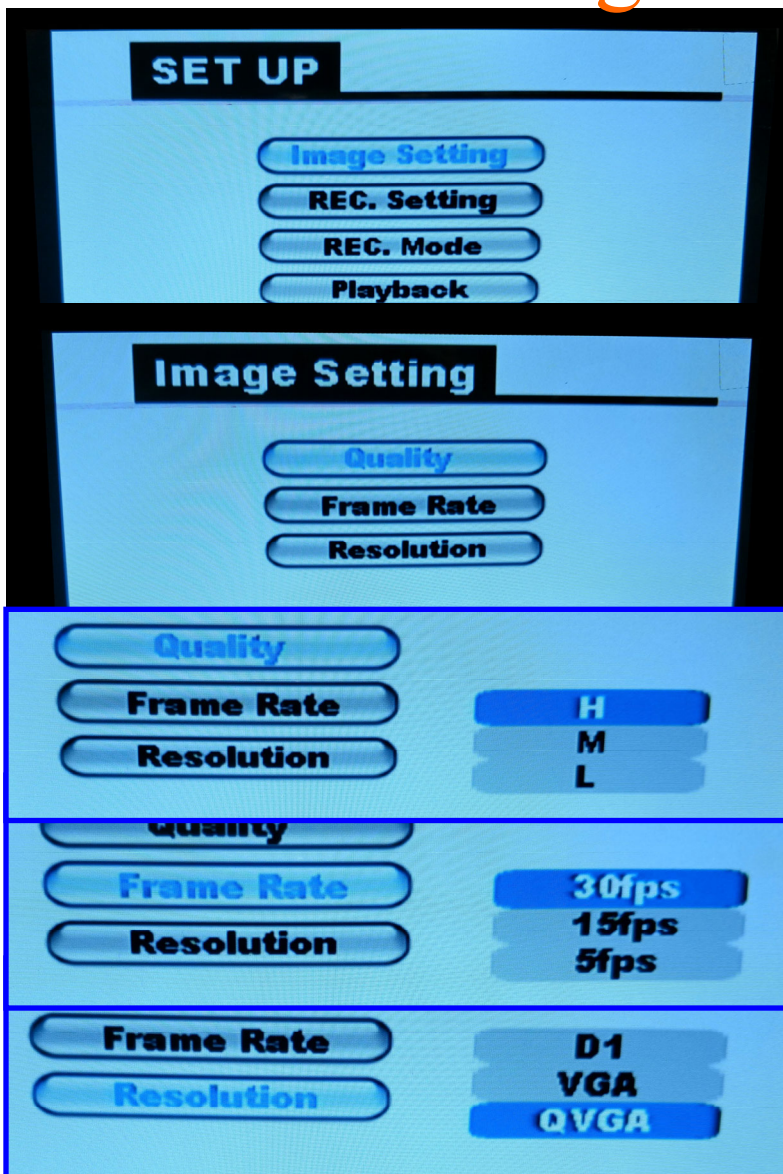
When you press the MENU button you will be presented with 5 options.

The 4th option PLAYBACK will be the most used of all the options.

We have preset all other options to their very best setting so there is no need to 'fix' or 'Check' setting. But for those who want to know every inch of the menu options, READ the next sections and pages, so you will know what each one does and where they should be set.



Section 1 - Image Setting



The image setting menu option has 3 sections, Quality, Frame Rate, and Resolution.

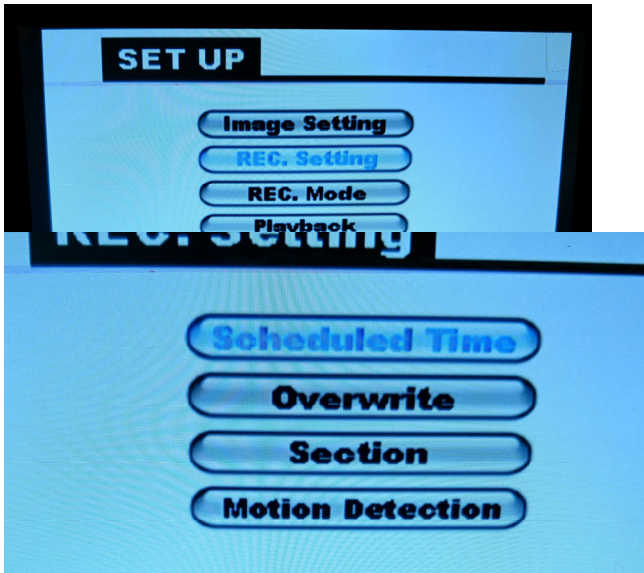
Quality is to set at H for High.

Frame Rate is set at 30fps.

Resolution is set at QVGA.

These are the best settings, feel free to adjust them but there isn't a need.

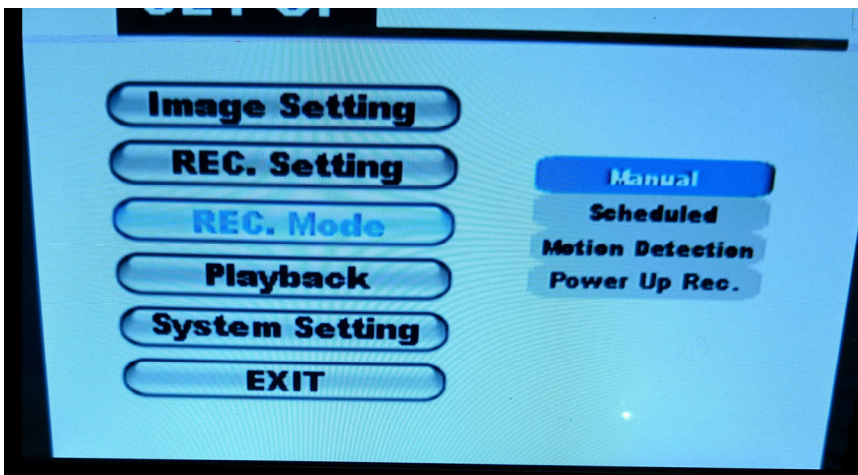
Section 2 - REC. Setting



Rec. Setting, menu option is to schedule when the SD Recorder should start recording video.

This menu is useless when scanning chimneys, Please DO NOT mess with any of these options.

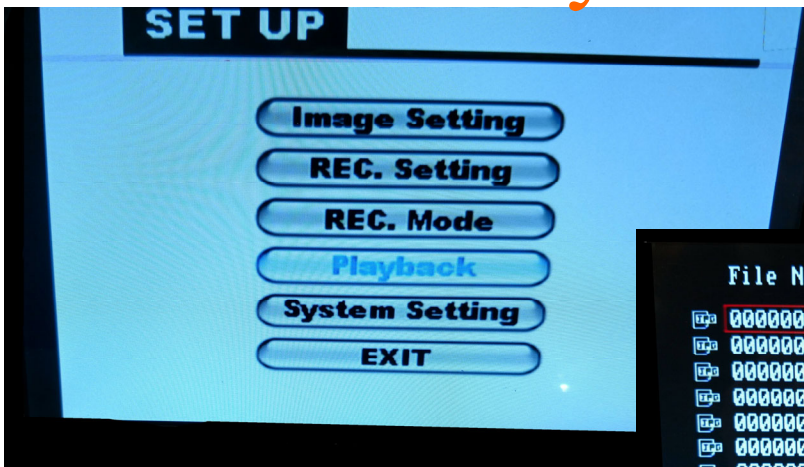
Section 3 - REC. Mode



Rec. Mode - gives you the option to set when the SD Recorder starts recording video. We have it set to MANUAL as this allows you to start/stop recording video when you want and allows you to take photos without interruption.

Please Do NOT mess with this option.

Section 4 - Playback

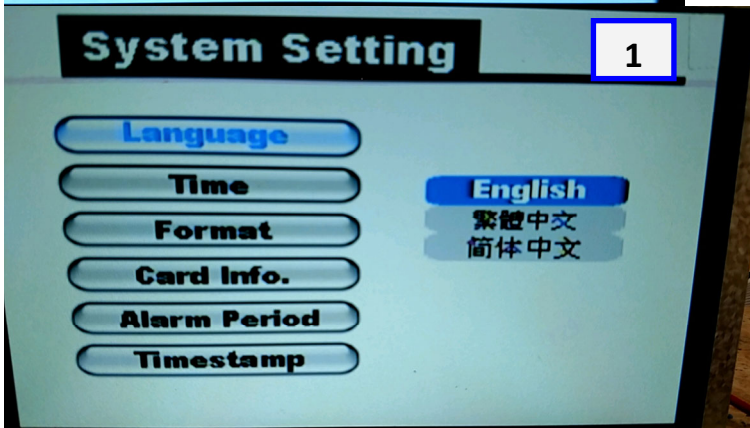
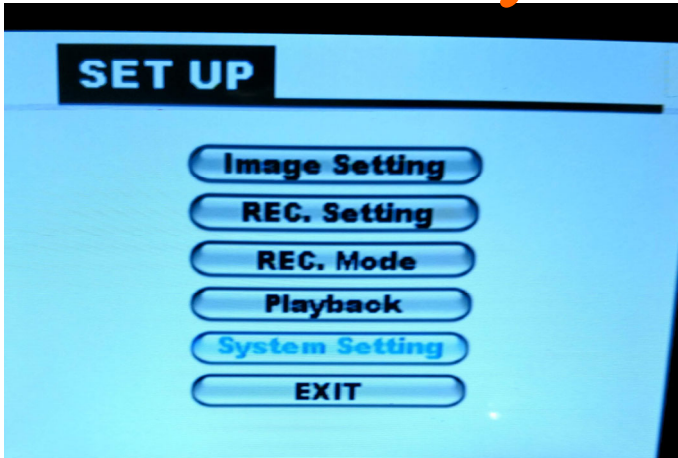


The Playback option is where you access the photos or videos you've taken.

This is explained in How to preview images or Videos you've taken. Pg25

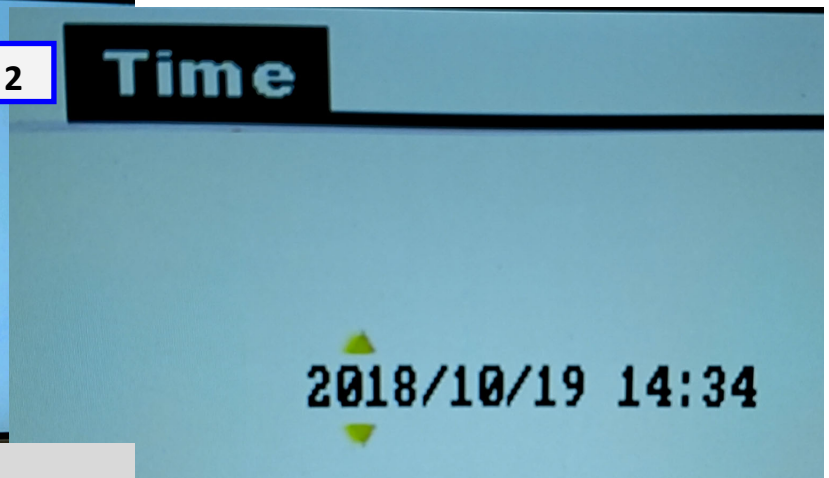
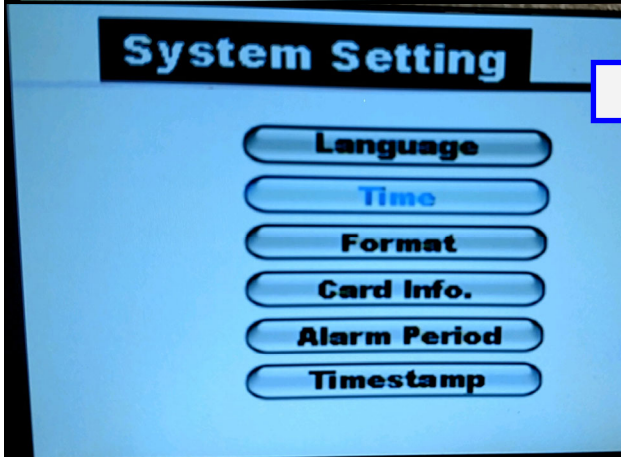
	File Name	Date	Start Time
📷	00000001	2018/09/13	14:00:00
📷	00000002	2018/09/13	14:00:02
📷	00000003	2018/09/13	14:00:04
📷	00000004	2018/09/13	14:00:06
📷	00000005	2018/09/13	14:00:08
📷	00000006	2018/09/13	14:00:10
📷	00000007	2018/09/13	14:10:36
📷	00000008	2018/09/13	14:10:40
			Page 001/006

Section 1 - System Setting



System setting has 6 options:

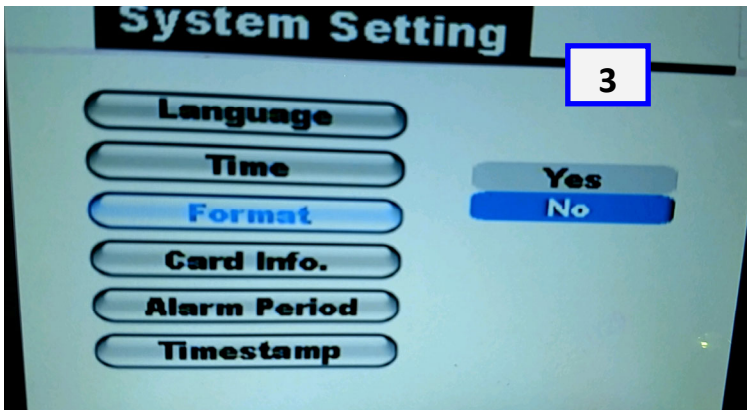
1. Language - English or Chinese
2. Time - Which is where you set date and time for timestamp.



To Set Date and Time:

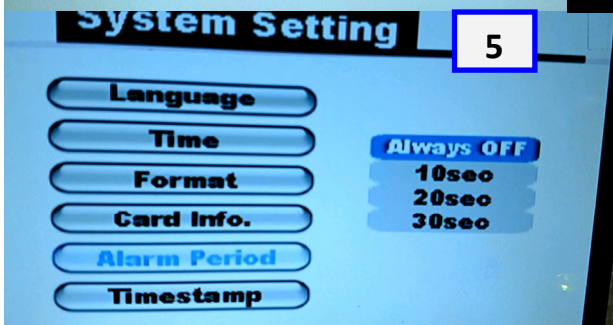
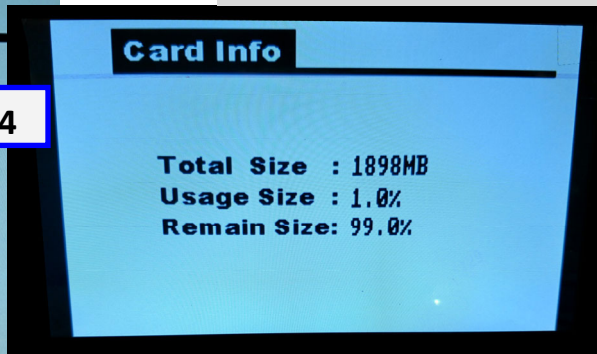
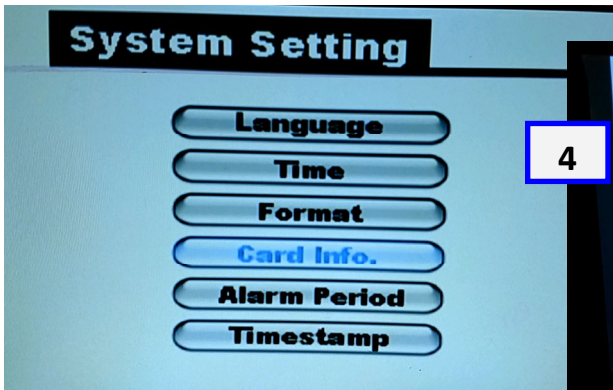
1. Press MENU.
2. Scroll down to System setting - Press OK.
3. Scroll down to Time - Press OK.
4. Use Up/Down Arrows to change numbers and Left/Right arrow to move place set.

Example: Down to change 2018 to 2017 and Right to move to 10.

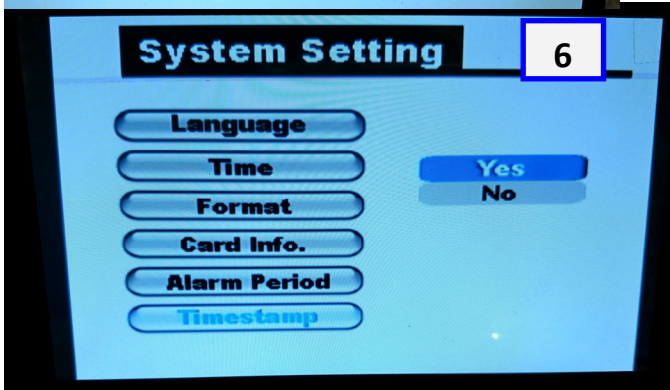


3. Format - to format SD card.

4. Card info. - Lets you see the total size of the SD card you are using; Percentage of memory being used; and percentage of memory left.



5. Alarm Period. - Ignore this setting, it should always be set to OFF.



6. Timestamp - still allows you to turn the time stamp on/off.

Chim-Scan® and Wifi Sd Card

So you've got all these great photos on the your Chim-Scan, and you want to send them to the customer or back to office so they can do a report.

How do you do that without carrying a laptop with you?? With the Toshiba Flash Air Card or the EZ Share SD card

Toshiba Flash Air Card and the EZ Share works like a regular SD Card but unlike ordinary SD cards, Toshiba Flash Air Card and the EZ Share includes built-in WiFi that connects your camera to your smartphone, tablet, PC or Mac wirelessly.

So how does it work

1. Read the instructions from Toshiba Flash Air Card or the EZ Share Card
2. Start up the App,
3. Take a picture or video
4. Watch as it downloads into your phone.

So now all your Chim-Scan photos and videos are on your phone or tablet, you can send them where ever you want.

The best Toshiba Flash Air Cards or EZ Share Cards to use with Chim-Scan is the 8GB or 16GB.



Disclaimer: If the Chim-Scan recorder takes pictures but they're not showing on the phone or tablet, please check the manufactures' information on the app being used first before calling Estoban. This is a 3rd party product and we (Estoban) have No control.



What to do if your Chim-Scan isn't working or needs repaired.

1. Review page 3 of this manual - Troubleshooting

A. If you're still having issues after going thru the troubleshooting guide call 641-472-7643

2. Fill out the Repair Form - available in this manual or online on our website. www.chimscan.net

3. Pack up what needs to be fixed. Please don't send the whole thing if only the cable, controller or the camera needs fixed.

HOW TO REMOVE & SHIP THE CONTROL BOX OR REELER.

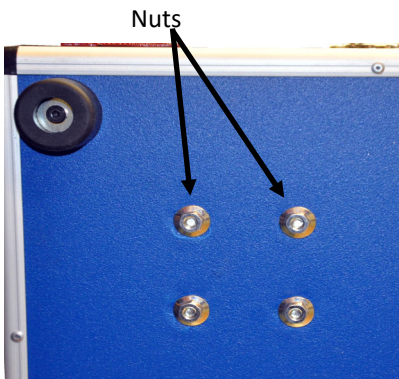


For the series 200 Control boxes, simply undo the 2 hex screws on the top of the unit and disconnecting the Controller cable from the reeler cable. Place into a **Large Flat Rate USPS box** and it's ready to go.



The reeler, simply undo the 4 nuts on the bottom of the case. Disconnect from the Camera and the Controller, wrap up in some form of packing, and put in a

Medium Flat Rate USPS box.



Chim-Scan® Repair Form

Please Print

Please send with Every Repair

Name:

Name of Company Owner (if your not the owner):

Company Name:

Email:

Date your sending/Sent Unit:

We do not spam or sell information - please list the email for the person we should contact.

Phone # :

Chim-Scan Serial #:

Preferred method of shipping: ☐ UPS* ☐ USPS**

**If you want us to ship the repair back with USPS, we ship Priority. Please list the address that receives mail.

*If you want us to ship the repair back with UPS - we ship Ground unless you request 3 day, 2nd, or next day. NOTE: 3rd, 2nd, and Next day shipping is expensive. Please list the address you want us to send the repair to.

☐ Ground ☐ 3Day ☐ 2nd Day ☐ Next Day
What are you sending? Please check all that apply

- ☐ Whole Unit - Controller, Camera, and Cable
Just the ☐ Controller ☐ Camera ☐ Cable
☐ Controller and Camera
☐ Controller and Cable
☐ Camera and Cable
☐ Multiple Cameras
☐ Multiple Cables
☐ Rotator
☐ Multiple Whole Units - We DO NOT recommend sending units in the same box.

☐ Not really sure/ Haven't a Clue
If your sending a Controller or a Whole Unit :**What type of Image/Video recorder dose it have?**

- ☐ None
☐ SD Recorder
☐ Mavicap - Floppy Disk
☐ Polaroid Camera - was new in 1980
☐ CF or Compact Flash
☐ VCR
☐ DVD
☐ Not really sure/ Haven't a Clue

If sending a camera: What type of Camera?

- ☐ Auto Focus
☐ Auto Focus Tilt
☐ Enviro Camera
☐ Enviro Camera with Cheesehead Bracket
☐ Cheesehead Auto Focus
☐ Lighthouse Camera
☐ Combo Camera Setup (the Enviro on top of the Lighthouse)
☐ Rectangle Shaped Camera
☐ Cube Shaped Camera

Tell us what's Happening or What's NOT happening

More Space on back page

Would you like Upgrades Done?

- ☐ No - Just Fix it ☐ No - but Send information on what can be done ☐ Yes - Lighthouse Switches Only
☐ Yes - SD Bypass ☐ Yes - Both

Why do we want to know all of this:

Because it can take up to 4 business days (depending on your location and how you send it) for your unit to arrive here. This forms acts a packing list for us, so should the box be damaged we can verify we have everything you sent. Also this forms helps us know who sent the unit and where we need to send it back to, shipping tags don't always give us the information we need.

How does this help you??

By filling this out, you not only help us but you help your office staff (even if you are the office staff) what needs to go, what your sending, when you sent it and why your sending it. If you keep a copy of this you can track how often your sending a unit or units back for repair and what needed repaired. This way if you notice your always sending a cable back for repair you can track down the cause.