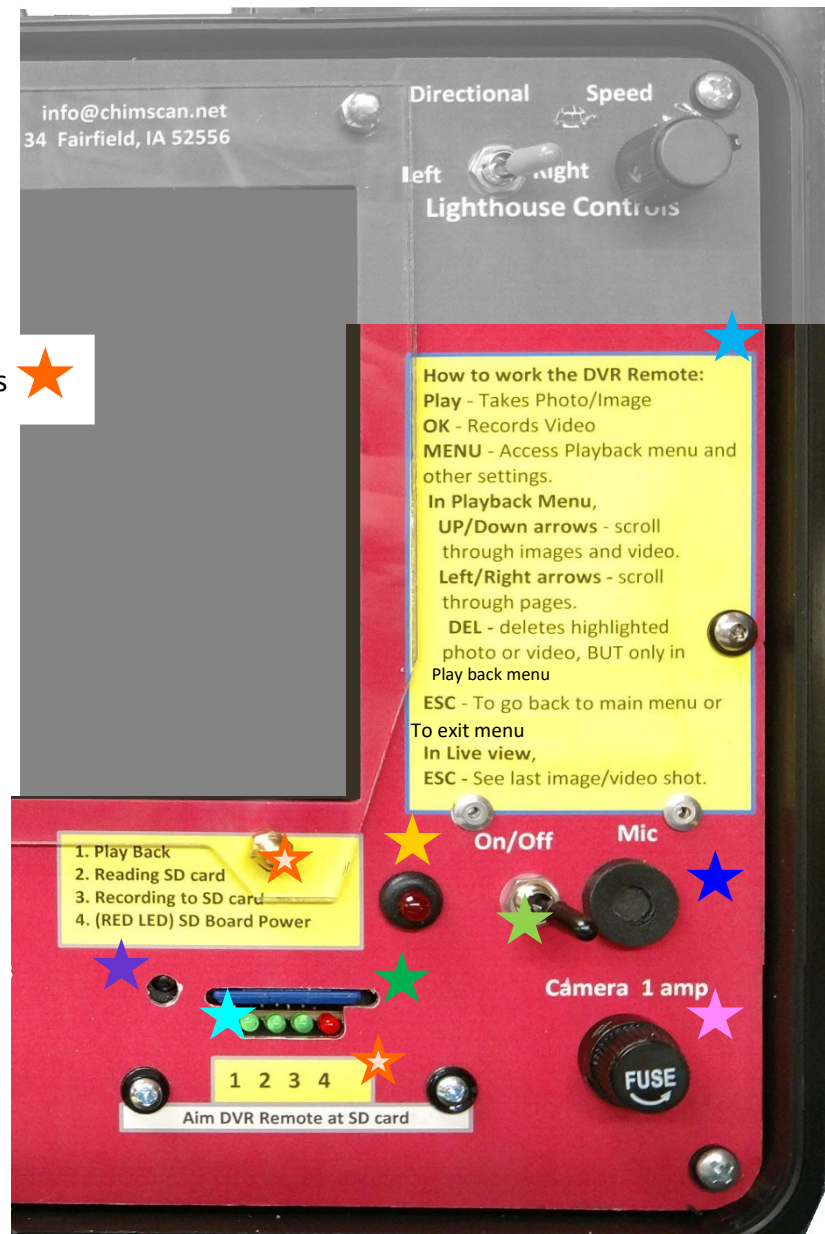


# How to Operate SD Recorder

- SD Recorder ★
- SD Recorders IR Eye ☆
- In field Directions for Remote ★
- What each LED under the SD card means ★
- Remote ★
- Microphone ☆
- Mic On/Off ★
- Mic On LED ★
- 1Amp Fuse ☆
- SD Recorder LEDs ★



# How to Use SD Recorder Remote

## You must have the remote to take Photos or Video

If you've lost the remote call 641-472-7643 to order a replacement for \$14.95

- ◆ Press OK to start recording a video.
- ◆ Press STOP to stop recording.
- ◆ Press PLAY to take photo.
- ◆ Press ESC to see last photo or video taken.
- ◆ Press DEL. to delete photo or video.
- ◆ Press ESC again to enter Playback Menu.
- ◆ Press Menu to return to Live Feed in Playback menu.
- ◆ Press Menu when viewing Live Feed to view Menu Options and Playback menu.
  
- ◆ All settings are pre-set by us for Optimum viewing and recording.
  
- ◆ In Playback Menu,
- ◆ Use the Up/Down Arrows to navigate page.
- ◆ Use Left/Right Arrow to move forward or back pages.
- ◆ To view and Photo or Video in playback menu, press OK.
- ◆ To Exit, press ESC.



What does Live Feed Mean:

It means you're viewing what camera is seeing right then.

# SD card insert and retrieval



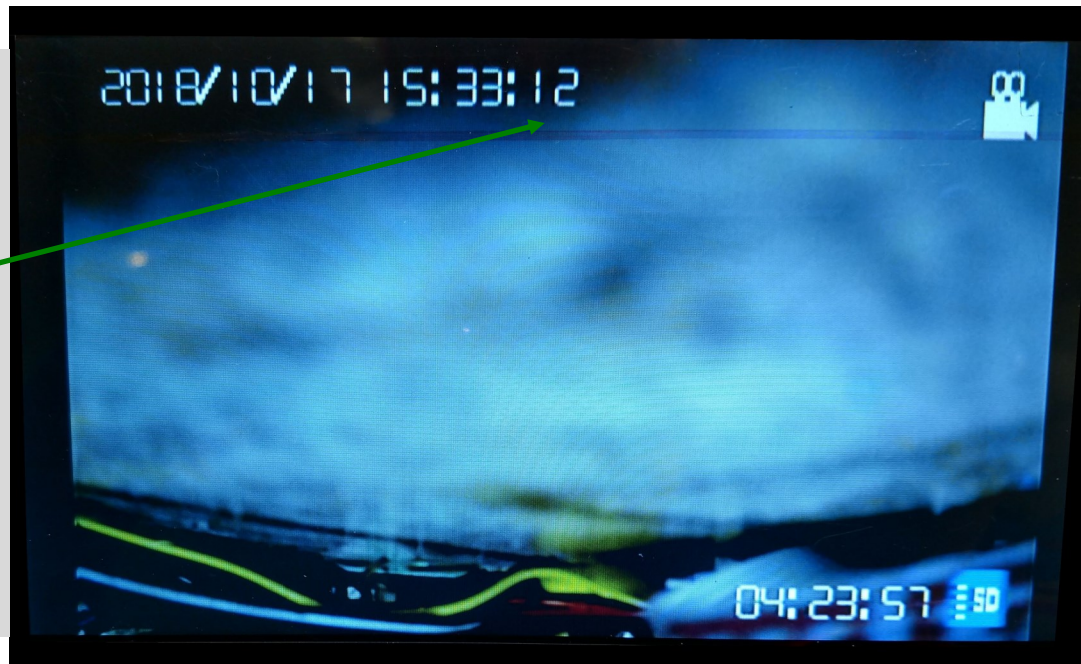
*Due to continuing improvements, actual product may differ slightly from photo.*



# How to capture your images or video

When you press PLAY to take a photo, you only see a quick glitch in screen. Example you may see 12 secs then to turns to 14 secs.

You CAN'T capture photos while your recording a video

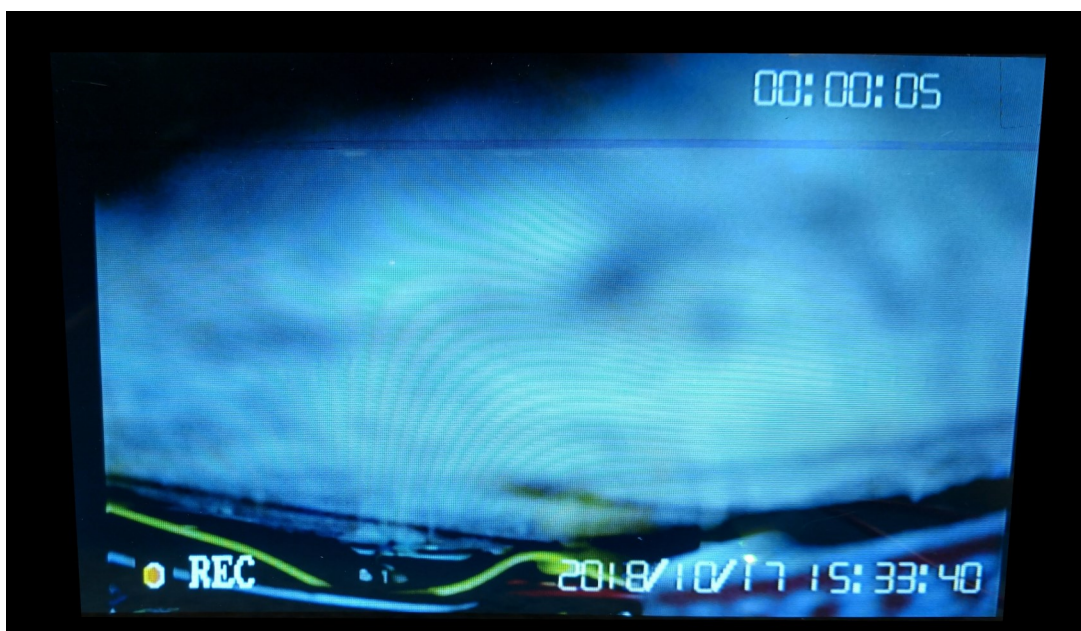


This is the screen view when you're recording a video.

Press OK to record video.

The SD recorder will record for 1 hour then stop.

To stop the recording at any time press STOP.



# How to preview your images or video

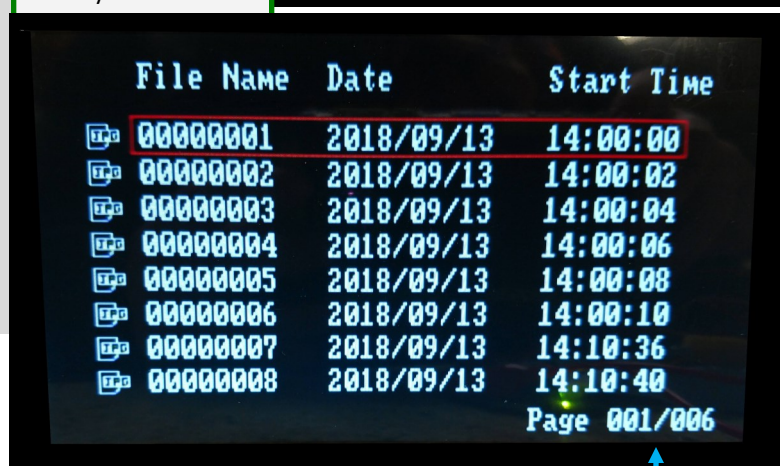
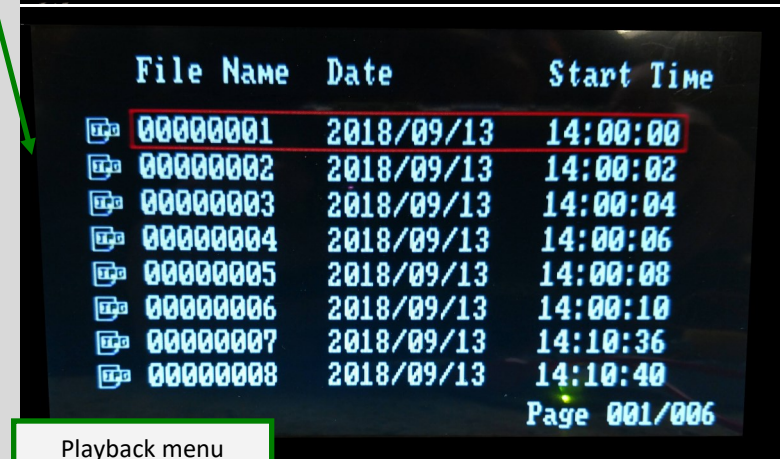
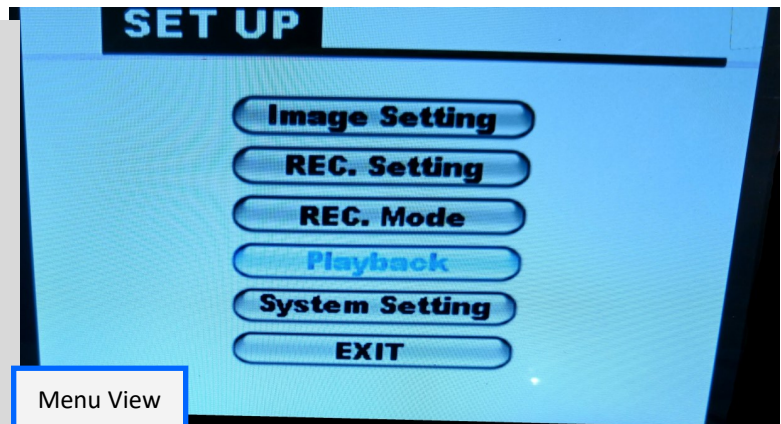
To view photos and video, there are 2 options.

Option 1:

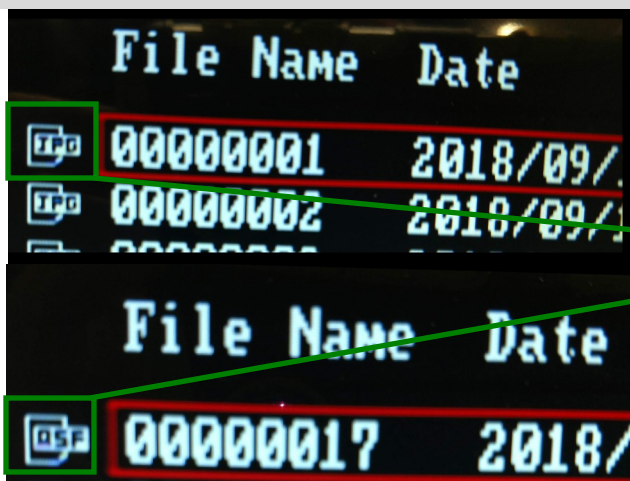
1. Press Menu
2. Use Down Arrow to move to Playback option.
3. Press Ok and now you are in the Playback Menu.

Inside the Playback Menu

1. Use UP/Down Arrows on the Remote to scroll through photos/videos.
2. To view a photo/videos - Press OK.
3. To go to next photo/video - Press ESC.
4. Each page of Playbook Menu hold 8 photos/videos.
  - A. To Scroll through pages use Left/Right Arrows.
5. To Exit Playback Menu - Press ESC or Menu.
  - A. ESC will take you to back to Menu.
  - B. MENU will take you back to Live Feed.



# of pages



This is a Photo - JPG = Photo

This is a Video - ASF = Video



# How to preview your images or video cont.

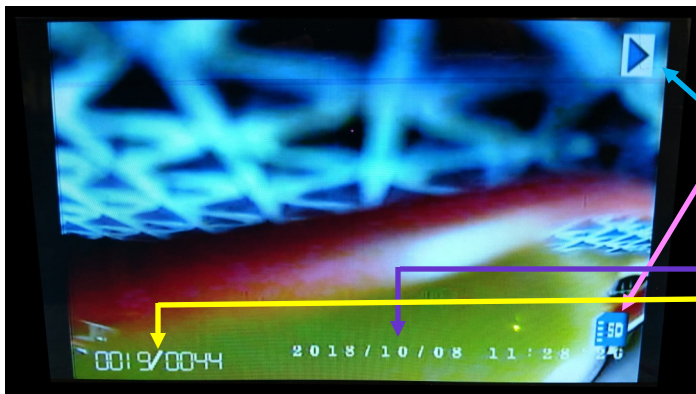
## Option 2:

1. While viewing Live Feed—Press ESC.
2. This will take you to last Photo/ Video taken.
3. To return to Live Feed - Press ESC, then Menu.

A. When you press ESC it takes you to Playback Menu.



# How to tell if you're looking at a photo or a Video



Play Icon' signifies that the recorder is in playback mode

SD Icon

Date and Time photo was taken

# of photo

Videos will show the same things as still Photos but with the addition of Video Length.

Play icon in video mode will mean Play - It turns into a pause symbol when the video is playing .



# Changing Battery for Time & Date

Occasionally you will need to replace the two AA batteries to keep time and date stamp accurate. This box is either under the controller or on the left side of the controller.

- Slide Door of box down to access batteries.
- Being careful not to pull wires from controller, replace the batteries and put all back in place.

## How to Delete Images/Videos

You can only delete photos/videos when you're viewing them.

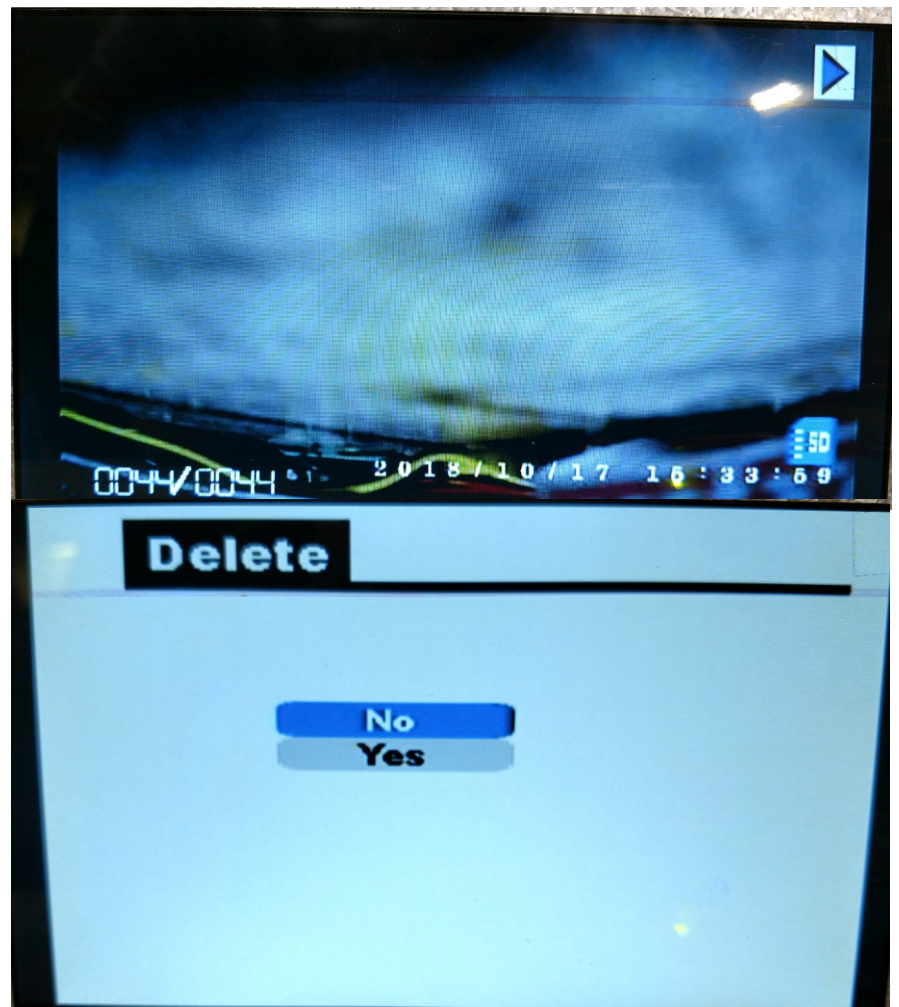
To Delete photos/videos:

- 1 Go in to Playback menu.
2. Press OK to select the photo/video you wish to delete.
3. Press DEL.
4. Use Down arrow to highlight yes.
5. Press Ok delete photo.

If you need to delete multiple photos:

Option 1 - Take card out of Chim-Scan, put it into a computer, copy photos/videos to a folder, then delete.

Option 2 - Use the above procedure to delete photos/videos one at a time while keeping card in Chim-Scan.



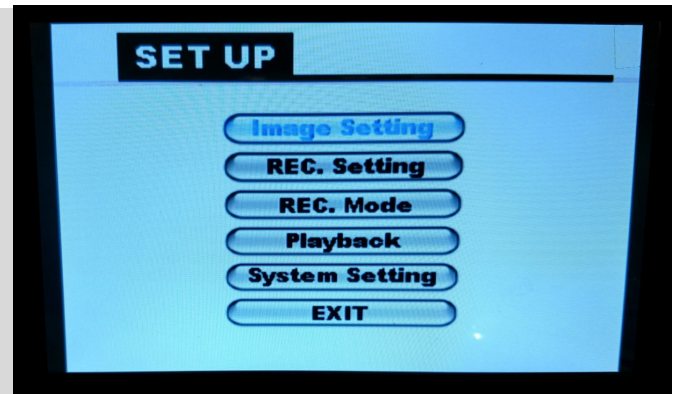


# Navigating SD Recorder Menu

When you press the MENU button you will be presented with 5 options.

The 4th option PLAYBACK will be the most used of all the options.

We have preset all other options to their very best setting so there is no need to 'fix' or 'Check' setting. But for those who want to know every inch of the menu options, READ the next sections and pages, so you will know what each one does and where they should be set.



## Section 1 - Image Setting



The image setting menu option has 3 sections, Quality, Frame Rate, and Resolution.

Quality is to set at H for High.

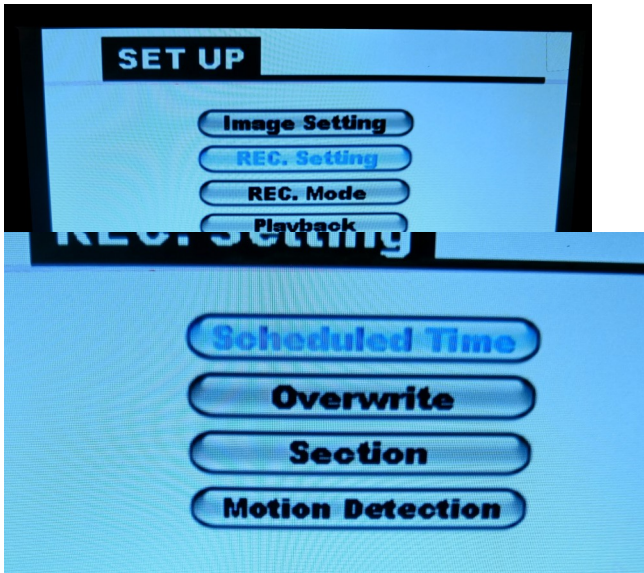
Frame Rate is set at 30fps.

Resolution is set at QVGA.

These are the best settings, feel free to adjust them but there isn't a need.



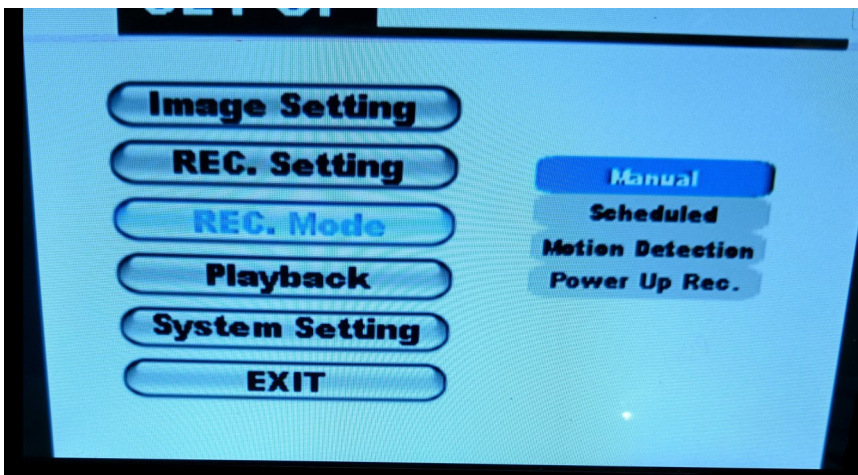
## Section 2 - REC. Setting



Rec. Setting, menu option is to schedule when the SD Recorder should start recording video.

This menu is useless when scanning chimneys, Please DO NOT mess with any of these options.

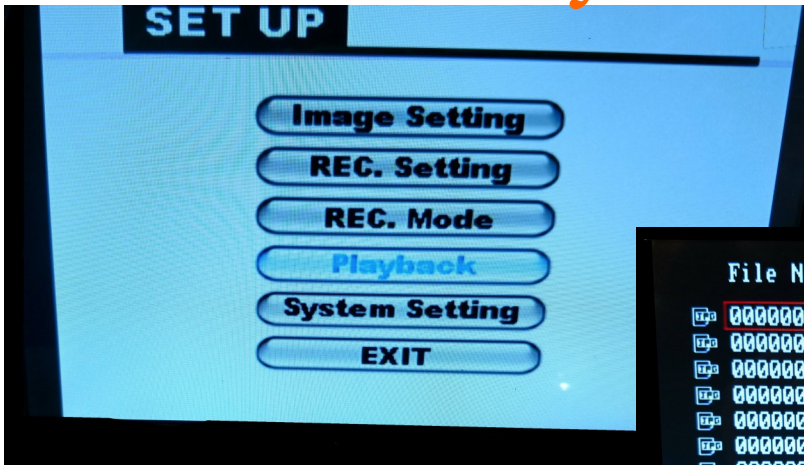
## Section 3 - REC. Mode



Rec. Mode - gives you the option to set when the SD Recorder starts recording video. We have it set to MANUAL as this allows you to start/stop recording video when you want and allows you to take photos without interruption.

Please Do NOT mess with this option.

## Section 4 - Playback

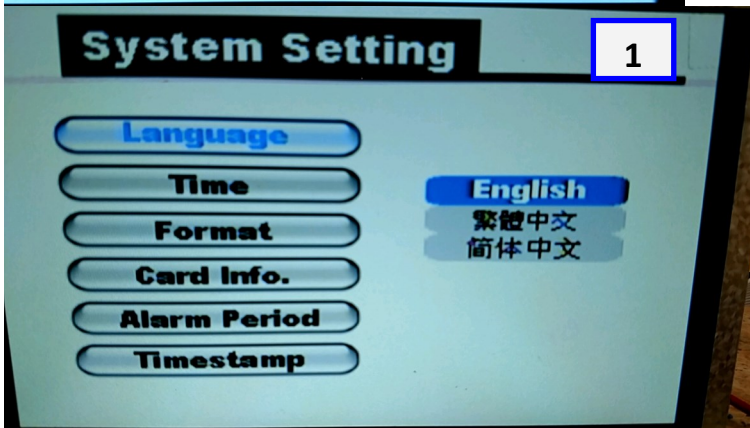
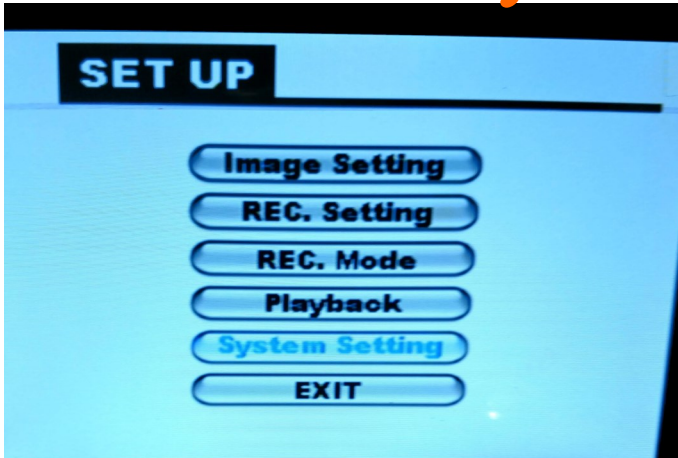


The Playback option is where you access the photos or videos you've taken.

This is explained in How to preview images or Videos you've taken. Pg25

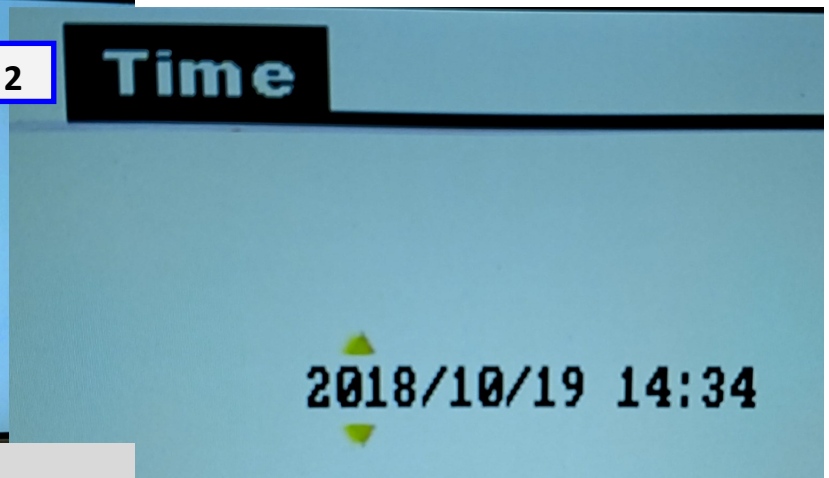
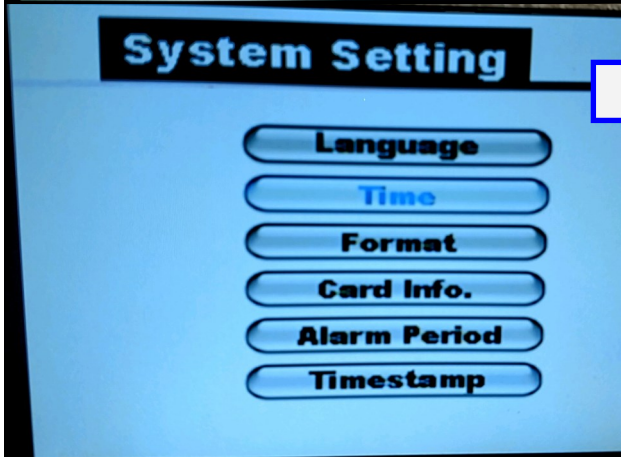
	File Name	Date	Start Time
📷	00000001	2018/09/13	14:00:00
📷	00000002	2018/09/13	14:00:02
📷	00000003	2018/09/13	14:00:04
📷	00000004	2018/09/13	14:00:06
📷	00000005	2018/09/13	14:00:08
📷	00000006	2018/09/13	14:00:10
📷	00000007	2018/09/13	14:10:36
📷	00000008	2018/09/13	14:10:40
			Page 001/006

# Section 1 - System Setting



System setting has 6 options:

1. Language - English or Chinese
2. Time - Which is where you set date and time for timestamp.

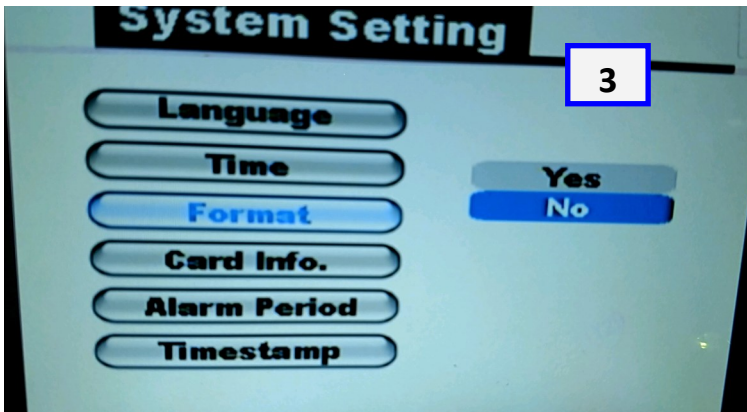


## To Set Date and Time:

1. Press MENU.
2. Scroll down to System setting - Press OK.
3. Scroll down to Time - Press OK.
4. Use Up/Down Arrows to change numbers and Left/Right arrow to move place set.

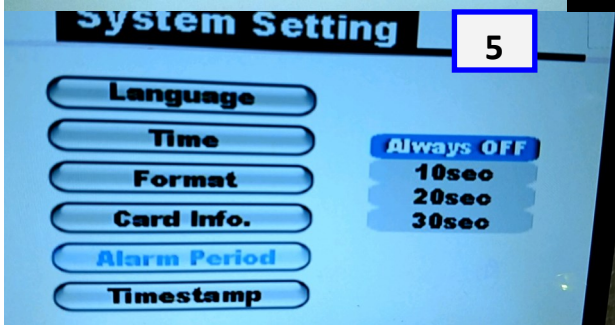
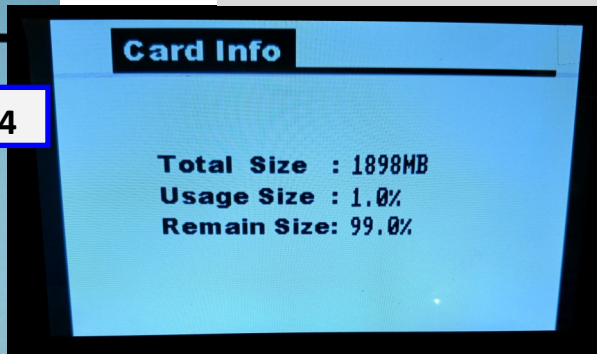
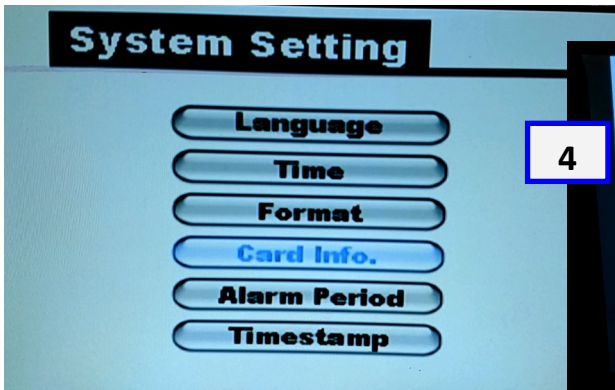
Example: Down to change 2018 to 2017 and Right to move to 10.



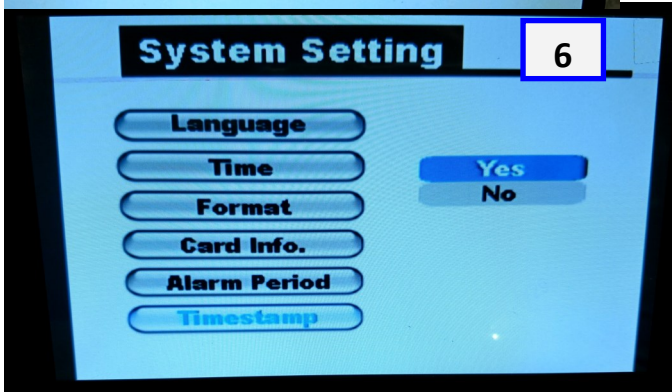


3. Format - to format SD card.

4. Card info. - Lets you see the total size of the SD card you are using; Percentage of memory being used; and percentage of memory left.



5. Alarm Period. - Ignore this setting, it should always be set to OFF.



6. Timestamp - still allows you to turn the time stamp on/off.



# What to do if your Chim-Scan isn't working or needs repaired.

1. Review page 3 of this manual - Troubleshooting
  - A. If you're still having issues after going thru the troubleshooting guide call 641-472-7643
2. Fill out the Repair Form - available in this manual or online on our website.  
[www.chimscan.net](http://www.chimscan.net)
3. Pack up what needs to be fixed. Please don't send the whole thing if only the cable, controller or the camera needs fixed.